

Datasheet for ABIN356710  
**anti-PRDM2 antibody (AA 245-573)**[Go to Product page](#)

## 2 Images

## Overview

Quantity:	0.4 mL
Target:	PRDM2
Binding Specificity:	AA 245-573
Reactivity:	Human, Rat, Mouse
Host:	Rabbit
Clonality:	Polyclonal
Conjugate:	This PRDM2 antibody is un-conjugated
Application:	Western Blotting (WB), Immunoprecipitation (IP), Immunohistochemistry (Paraffin-embedded Sections) (IHC (p)), Enzyme Immunoassay (EIA)

## Product Details

Immunogen:	Purified recombinant GST fusion protein encoding aa 245-573 of Rat Riz1. Genename: PRDM2
Isotype:	Ig Fraction
Specificity:	This antibody also recognizes the isoform beta (Riz2) of PRDM2 (185 kDa)
Purification:	Protein G Chromatography, eluted with high and low pH buffers and neutralized immediately, followed by dialysis against PBS.

## Target Details

Target:	PRDM2
Alternative Name:	PRDM2 ( <a href="#">PRDM2 Products</a> )

## Target Details

**Background:** PRDM2 is a 250-kD nuclear protein containing 8 zinc finger motifs. It contains an RB-binding motif that is related to that of the adenovirus E1A oncoprotein, RIZ also shares an antigenic epitope with the C terminus of E1A. It is expressed in human retinoblastoma cells and at low levels in all other human cell lines examined. Using fluorescence in situ hybridization, the PRDM2 gene has been mapped to 1p36. PRDM2 may be a candidate target of 1p36 alterations that commonly occur in neuroendocrine, breast, liver, colon, skin, and lymphoid tumors. Synonyms: GATA-3-binding protein G3B, HUMHOXY1, KMT8, Lysine N-methyltransferase 8, MTB-ZF, MTE-binding protein, PR domain zinc finger protein 2, RIZ1, RIZ2, Retinoblastoma protein-interacting zinc finger protein

**Gene ID:** 7799, 5874

**UniProt:** [Q13029](#)

## Application Details

**Application Notes:** ELISA: 1/1,000. Western Blot: 1/100-1/500. Immunohistochemistry: 1/100-1/500.  
Immunoprecipitation: 1 µg Pab/100 µg cell lysate.  
Other applications not tested.  
Optimal dilutions are dependent on conditions and should be determined by the user.

**Restrictions:** For Research Use only

## Handling

**Format:** Liquid

**Concentration:** 0.25 mg/mL

**Buffer:** PBS with 0.09 % (W/V) Sodium Azide as preservative

**Preservative:** Sodium azide

**Precaution of Use:** This product contains sodium azide: a POISONOUS AND HAZARDOUS SUBSTANCE which should be handled by trained staff only.

**Handling Advice:** Avoid repeated freezing and thawing.

**Storage:** 4 °C/-20 °C

**Storage Comment:** Store undiluted at 2-8 °C for one month or (in aliquots) at -20 °C for longer.

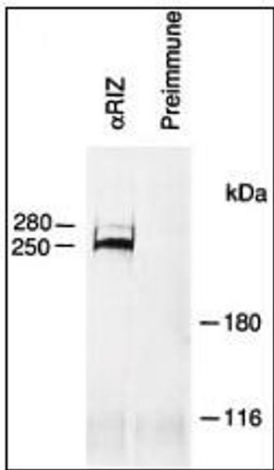


Image 1.

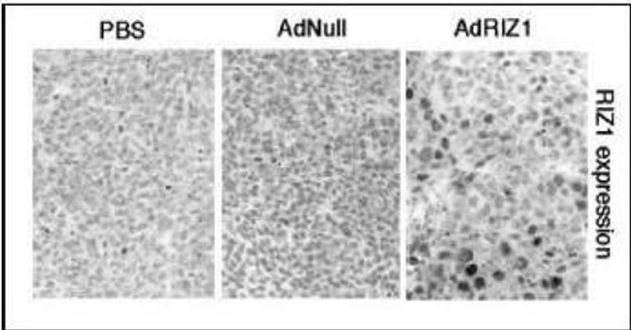


Image 2.