

Datasheet for ABIN356752

anti-SENP2 antibody (C-Term)[Go to Product page](#)**2** Images

Overview

Quantity:	0.4 mL
Target:	SENP2
Binding Specificity:	C-Term
Reactivity:	Human, Mouse
Host:	Rabbit
Clonality:	Polyclonal
Conjugate:	This SENP2 antibody is un-conjugated
Application:	Western Blotting (WB), Immunohistochemistry (Paraffin-embedded Sections) (IHC (p)), Enzyme Immunoassay (EIA)

Product Details

Immunogen:	This antibody is generated from rabbits immunized with a KLH conjugated synthetic peptide selected from the C-terminal region of human SENP2.
Isotype:	Ig Fraction
Specificity:	This antibody is specific to SENP2 (C-term).
Purification:	Protein G Chromatography, eluted with high and low pH buffers and neutralized immediately, followed by dialysis against PBS.

Target Details

Target:	SENP2
Alternative Name:	SENP2 (SENP2 Products)

Target Details

Background:	SUMO is a small ubiquitin-like protein that can be covalently conjugated to other proteins. SEN2 is one of a group of enzymes that process newly synthesized SUMO1, SUMO2, and SUMO3 into the conjugatable mature forms and catalyze the deconjugation of these same SUMO proteins from their targeted substrates. SEN2 may also down-regulate CTNNB1 levels and thereby modulate the Wnt pathway.Synonyms: Axam2, KIAA1331, SMT3-specific isopeptidase 2, Sentrin-specific protease 2, Sentrin/SUMO-specific protease SEN2, Smt3ip2
Gene ID:	59343, 9606
UniProt:	Q9HC62
Pathways:	Chromatin Binding

Application Details

Application Notes:	ELISA: 1/1,000. Western blot: 1/100-1/500. Immunohistochemistry: 1/50-1/100. Other applications not tested. Optimal dilutions are dependent on conditions and should be determined by the user.
Restrictions:	For Research Use only

Handling

Format:	Liquid
Concentration:	0.25 mg/mL
Buffer:	PBS containing 0.09 % (W/V) Sodium Azide as preservative.
Preservative:	Sodium azide
Precaution of Use:	This product contains sodium azide: a POISONOUS AND HAZARDOUS SUBSTANCE which should be handled by trained staff only.
Handling Advice:	Avoid repeated freezing and thawing.
Storage:	4 °C/-20 °C
Storage Comment:	Store the antibody undiluted at 2-8 °C for one month or (in aliquots) at -20 °C for longer.

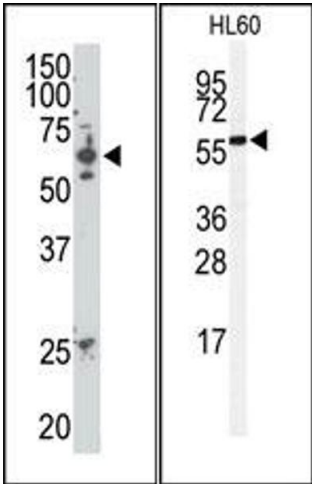


Image 1.

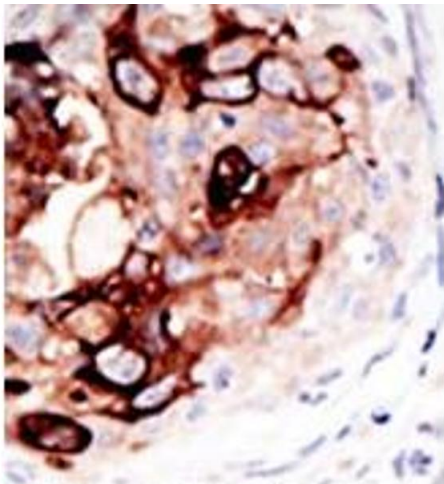


Image 2.