

Datasheet for ABIN356787
anti-SUMO4 antibody (Met55Val-Mutant)[Go to Product page](#)

2 Images

Overview

Quantity:	0.4 mL
Target:	SUMO4
Binding Specificity:	Met55Val-Mutant
Reactivity:	Human
Host:	Rabbit
Clonality:	Polyclonal
Conjugate:	This SUMO4 antibody is un-conjugated
Application:	Western Blotting (WB), Immunohistochemistry (Paraffin-embedded Sections) (IHC (p)), Enzyme Immunoassay (EIA)

Product Details

Immunogen:	This antibody is generated from rabbits immunized with a KLH conjugated peptide CEPRGLS(V)KQIRFRFG selected from human SUMO4. This antibody is affinity purified using peptides CEPRGLS(V)KQIRFRFG (positive selection) and CEPRGLS(M)KQIRFRFG (negative selection).
Isotype:	Ig Fraction
Specificity:	This antibody is specific to SUMO4 (V55 Mutant).
Purification:	Saturated Ammonium Sulfate (SAS) precipitation followed by dialysis against PBS

Target Details

Target:	SUMO4
---------	-------

Target Details

Alternative Name:	SUMO4 / SMT3H4 (SUMO4 Products)
Background:	<p>SUMO4 is a member of the SUMO gene family. This family of small ubiquitin-related modifiers covalently modify target lysines in proteins and control the target proteins' subcellular localization, stability, or activity. Upon oxidative stress, SUMO4 conjugates to various anti-oxidant enzymes, chaperones, and stress defense proteins. This protein may also conjugate to NFKBIA, TFAP2A and FOS, negatively regulating their transcriptional activity, and to NR3C1, positively regulating its transcriptional activity. Covalent attachment to SUMO4 substrates requires prior activation by the E1 complex SAE1-SAE2 and linkage to the E2 enzyme UBE2I. In contrast to SUMO1, SUMO2 and SUMO3, SUMO4 seems to be insensitive to sentrin-specific proteases due to the presence of Pro-90. This may impair processing to mature form and conjugation to substrates. SUMO4 is located in the cytoplasm and specifically modifies IKBA, leading to negative regulation of NF-kappa-B-dependent transcription of the IL12B gene. The M55V substitution has been associated with type I diabetes. Synonyms: SUMO-4, Small ubiquitin-like protein 4, Small ubiquitin-related modifier 4</p>
Gene ID:	387082, 9606
UniProt:	Q6EEV6

Application Details

Application Notes:	<p>ELISA: 1/1,000. Western blot: 1/100-1/500. Immunohistochemistry on paraffin sections: 1/50-1/100.</p> <p>Other applications not tested.</p> <p>Optimal dilutions are dependent on conditions and should be determined by the user.</p>
Restrictions:	For Research Use only

Handling

Format:	Liquid
Concentration:	0.25 mg/mL
Buffer:	PBS containing 0.09 % (W/V) Sodium Azide as preservative
Preservative:	Sodium azide
Precaution of Use:	This product contains sodium azide: a POISONOUS AND HAZARDOUS SUBSTANCE which should be handled by trained staff only.
Handling Advice:	Avoid repeated freezing and thawing.

Handling

Storage:	4 °C/-20 °C
Storage Comment:	Store the antibody undiluted at 2-8 °C for one month or (in aliquots) at-20 °C for longer.

Images

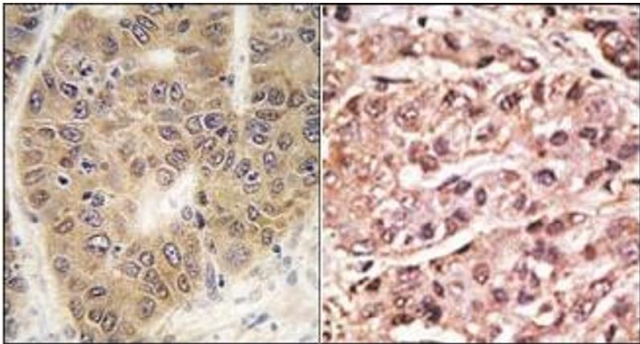


Image 1.

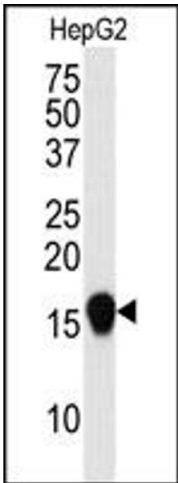


Image 2.