

Datasheet for ABIN356791

**anti-SUV39H2 antibody (C-Term)****2** Images[Go to Product page](#)

## Overview

Quantity:	0.4 mL
Target:	SUV39H2
Binding Specificity:	C-Term
Reactivity:	Human
Host:	Rabbit
Clonality:	Polyclonal
Conjugate:	This SUV39H2 antibody is un-conjugated
Application:	Western Blotting (WB), Immunohistochemistry (Paraffin-embedded Sections) (IHC (p)), Enzyme Immunoassay (EIA)

## Product Details

Immunogen:	This antibody is generated from rabbits immunized with a KLH conjugated synthetic peptide at the C-terminal of human SUV39H2.
Isotype:	Ig Fraction
Purification:	Protein G Chromatography, eluted with high and low pH buffers and neutralized immediately, followed by dialysis against PBS.

## Target Details

Target:	SUV39H2
Alternative Name:	SUV39H2 / KMT1B ( <a href="#">SUV39H2 Products</a> )
Background:	The murine gene Suv39h2 encodes an H3 histone methyltransferase (HMTase) 59 % identical

## Target Details

in sequence to mouse Suv39h1. During embryogenesis, both proteins overlap in tissue expression, yet Suv39h2 transcripts are restricted to the testes in adult animals. Immunolocalization of the Suv39h2 protein during spermatogenesis indicates enrichment at the heterochromatin from the leptotene to the round spermatid stage. Moreover, Suv39h2 specifically accumulates with chromatin of the sex chromosomes, which undergo transcriptional silencing during the first meiotic prophase. Suv39h2 HMTase may also organize meiotic heterochromatin with the potential for epigenetic imprint to the male germline. Synonyms: Histone H3-K9 methyltransferase 2, Histone-lysine N-methyltransferase SUV39H2, Lysine N-methyltransferase 1B, Suppressor of variegation 3-9 homolog 2

Gene ID: 5874

UniProt: [Q9H5I1](#)

## Application Details

Application Notes: ELISA: 1/1,000. Western blot: 1/250-1/500. Immunohistochemistry: 1/50-1/100.  
Other applications not tested.  
Optimal dilutions are dependent on conditions and should be determined by the user.

Restrictions: For Research Use only

## Handling

Format: Liquid

Concentration: 0.25 mg/mL

Buffer: PBS containing 0.09 % (W/V) Sodium Azide as preservative.

Preservative: Sodium azide

Precaution of Use: This product contains sodium azide: a POISONOUS AND HAZARDOUS SUBSTANCE which should be handled by trained staff only.

Handling Advice: Avoid repeated freezing and thawing.

Storage: 4 °C/-20 °C

Storage Comment: Store the antibody undiluted at 2-8 °C for one month or (in aliquots) at -20 °C for longer.

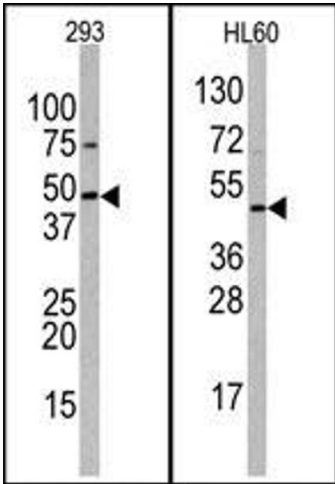


Image 1.

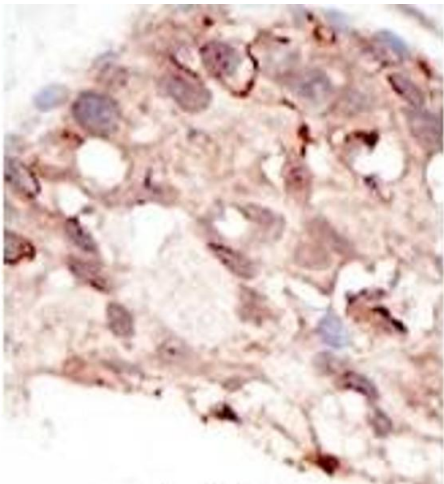


Image 2.