

Datasheet for ABIN356809

anti-BCL2A1 antibody (BH3 Domain, N-Term)[Go to Product page](#)**2** Images

Overview

Quantity:	0.4 mL
Target:	BCL2A1
Binding Specificity:	BH3 Domain, N-Term
Reactivity:	Human
Host:	Rabbit
Clonality:	Polyclonal
Conjugate:	This BCL2A1 antibody is un-conjugated
Application:	Western Blotting (WB), Immunohistochemistry (Paraffin-embedded Sections) (IHC (p)), Enzyme Immunoassay (EIA)

Product Details

Immunogen:	This antibody was developed against a synthetic peptide selected from the N-terminal region of human BCL2-related protein A1, within the BH3 domain.
Isotype:	Ig Fraction
Specificity:	This antibody is specific to BCL2A1 (BH3 Domain).
Purification:	Protein G Chromatography, eluted with high and low pH buffers and neutralized immediately, followed by dialysis against PBS.

Target Details

Target:	BCL2A1
Abstract:	BCL2A1 Products

Target Details

Background: Bcl-2 related Protein A1 is a member of the BCL-2 protein family. The proteins of this family form hetero- or homodimers and act as anti- and pro-apoptotic regulators that are involved in a wide variety of cellular activities such as embryonic development, homeostasis and tumorigenesis. The protein encoded by this gene is able to reduce the release of pro-apoptotic cytochrome c from mitochondria and block caspase activation. This gene is a direct transcription target of NF-kappa B in response to inflammatory mediators, and has been shown to be up-regulated by different extracellular signals, such as granulocyte-macrophage colony-stimulating factor (GM-CSF), CD40, phorbol ester and inflammatory cytokine TNF and IL-1, which suggests a cytoprotective function that is essential for lymphocyte activation as well as cell survival. **Synonyms:** BCL2A1, BCL2L5, BFL1, Bcl-2-like protein 5, Bcl-2-related protein A1, GRS, HBPA1, Hemopoietic-specific early response protein, Protein BFL-1

Gene ID: 597, 9606

UniProt: [Q16548](#)

Application Details

Application Notes: ELISA: 1/1,000. Western blot: 1/100-1/500. Immunohistochemistry: 1/50-1/100.
Other applications not tested.
Optimal dilutions are dependent on conditions and should be determined by the user.

Restrictions: For Research Use only

Handling

Format: Liquid

Concentration: 0.25 mg/mL

Buffer: PBS containing 0.09 % (W/V) Sodium Azide as preservative.

Preservative: Sodium azide

Precaution of Use: This product contains sodium azide: a POISONOUS AND HAZARDOUS SUBSTANCE which should be handled by trained staff only.

Handling Advice: Avoid repeated freezing and thawing.

Storage: 4 °C/-20 °C

Storage Comment: Store the antibody undiluted at 2-8 °C for one month or (in aliquots) at -20 °C for longer.

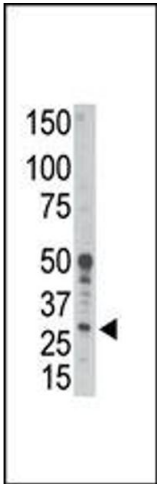


Image 1.

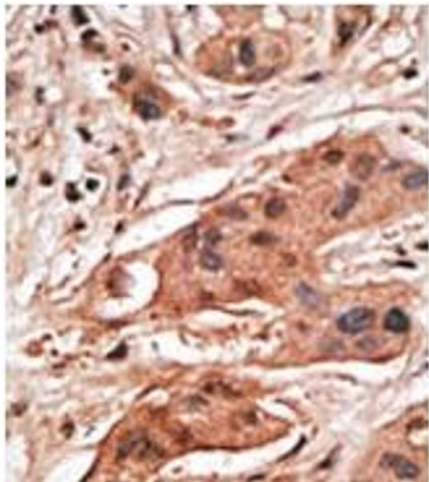


Image 2.