

Datasheet for ABIN356813

anti-BCL2L14 antibody (BH3 Domain, Isoform 3)[Go to Product page](#)**2** Images

Overview

Quantity:	0.4 mL
Target:	BCL2L14
Binding Specificity:	BH3 Domain, Isoform 3
Reactivity:	Human, Mouse
Host:	Rabbit
Clonality:	Polyclonal
Conjugate:	This BCL2L14 antibody is un-conjugated
Application:	Western Blotting (WB), Immunohistochemistry (Paraffin-embedded Sections) (IHC (p)), Enzyme Immunoassay (EIA)

Product Details

Immunogen:	This antibody was developed against a synthetic peptide selected from the BH3 domain of human Bcl-G isoform 3 (Median form).
Isotype:	Ig Fraction
Specificity:	This antibody is specific to Bcl-G (BH3 Domain).
Purification:	Protein G Chromatography, eluted with high and low pH buffers and neutralized immediately, followed by dialysis against PBS.

Target Details

Target:	BCL2L14
Alternative Name:	Bcl-2-Like 14 (BCL2L14 Products)

Target Details

Background: Bcl-G belongs to the BCL2 protein family. BCL2 family members form hetero- or homodimers and act as anti- or pro-apoptotic regulators that are involved in a wide variety of cellular activities. Overexpression of Bcl-G has been shown to induce apoptosis in cells. Synonyms: Apoptosis facilitator Bcl-2-like protein 14, BCL2L14, BCLG, Bcl-G, Bcl2-L-14

Gene ID: 79370, 9606

UniProt: [Q9BZR8](#)

Application Details

Application Notes: ELISA: 1/1,000. Western blot: 1/100-1/500. Immunohistochemistry: 1/50-1/100.
Other applications not tested.
Optimal dilutions are dependent on conditions and should be determined by the user.

Restrictions: For Research Use only

Handling

Format: Liquid

Concentration: 0.25 mg/mL

Buffer: PBS containing 0.09 % (W/V) Sodium Azide as preservative.

Preservative: Sodium azide

Precaution of Use: This product contains sodium azide: a POISONOUS AND HAZARDOUS SUBSTANCE which should be handled by trained staff only.

Handling Advice: Avoid repeated freezing and thawing.

Storage: 4 °C/-20 °C

Storage Comment: Store the antibody undiluted at 2-8 °C for one month or (in aliquots) at -20 °C for longer.

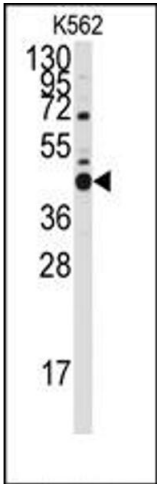


Image 1.

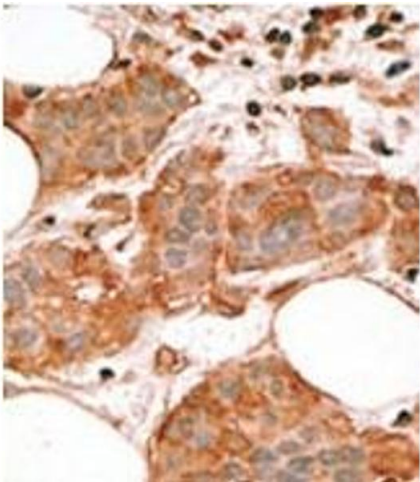


Image 2.