

Datasheet for ABIN356866
anti-Cadherin 8 antibody (N-Term)[Go to Product page](#)

2 Images

1 Publication

Overview

Quantity:	0.4 mL
Target:	Cadherin 8 (CDH8)
Binding Specificity:	N-Term
Reactivity:	Human
Host:	Rabbit
Clonality:	Polyclonal
Conjugate:	This Cadherin 8 antibody is un-conjugated
Application:	Western Blotting (WB), Immunohistochemistry (Paraffin-embedded Sections) (IHC (p)), Enzyme Immunoassay (EIA)

Product Details

Immunogen:	This antibody is generated from rabbits immunized with a KLH conjugated synthetic peptide selected from the N-terminal region of human CDH8.
Isotype:	Ig Fraction
Specificity:	This antibody is specific to CDH8 (N-term).
Purification:	Protein A Chromatography followed by Peptide Affinity purification.

Target Details

Target:	Cadherin 8 (CDH8)
Alternative Name:	Cadherin-8 (CDH8 Products)

Target Details

Background:	CDH8 is a type II classical cadherin from the cadherin superfamily, integral membrane proteins that mediate calcium-dependent cell-cell adhesion. Mature cadherin proteins are composed of a large N-terminal extracellular domain, a single membrane-spanning domain, and a small, highly conserved C-terminal cytoplasmic domain. The extracellular domain consists of 5 subdomains, each containing a cadherin motif, and appears to determine the specificity of the protein's homophilic cell adhesion activity. Type II (atypical) cadherins are defined based on their lack of a HAV cell adhesion recognition sequence specific to type I cadherins. This particular cadherin is expressed in brain and is putatively involved in synaptic adhesion, axon outgrowth and guidance.Synonyms: CDH8
Gene ID:	1006, 9606
UniProt:	P55286
Pathways:	Cell-Cell Junction Organization

Application Details

Application Notes:	ELISA: 1/1,000. Western blot: 1/50-1/100. Immunohistochemistry: 1/10-1/50. Other applications not tested. Optimal dilutions are dependent on conditions and should be determined by the user.
Restrictions:	For Research Use only

Handling

Format:	Liquid
Concentration:	0.25 mg/mL
Buffer:	PBS containing 0.09 % (W/V) Sodium Azide as preservative.
Preservative:	Sodium azide
Precaution of Use:	This product contains sodium azide: a POISONOUS AND HAZARDOUS SUBSTANCE which should be handled by trained staff only.
Handling Advice:	Avoid repeated freezing and thawing.
Storage:	4 °C/-20 °C
Storage Comment:	Store the antibody undiluted at 2-8 °C for one month or (in aliquots) at -20 °C for longer.

Publications

Product cited in: Kher, Sha, Escobar, Andreoli, Wang, Xu, Wandinger-Ness, Bacallao: "Ectopic expression of cadherin 8 is sufficient to cause cyst formation in a novel 3D collagen matrix renal tubule culture." in: **American journal of physiology. Cell physiology**, Vol. 301, Issue 1, pp. C99-C105, (2011) ([PubMed](#)).

Images

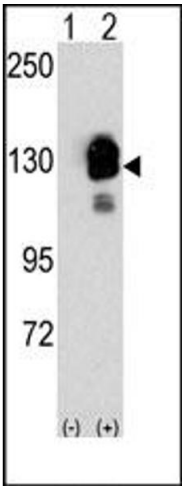


Image 1.

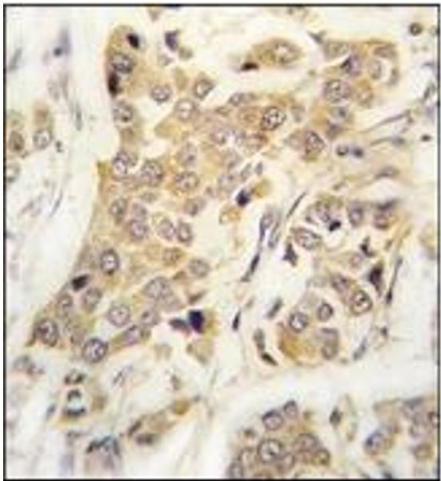


Image 2.