

Datasheet for ABIN356890
anti-CDH6 antibody (C-Term)[Go to Product page](#)

2 Images

Overview

Quantity:	0.4 mL
Target:	CDH6
Binding Specificity:	C-Term
Reactivity:	Human
Host:	Rabbit
Clonality:	Polyclonal
Conjugate:	This CDH6 antibody is un-conjugated
Application:	Western Blotting (WB), Immunohistochemistry (Paraffin-embedded Sections) (IHC (p)), Enzyme Immunoassay (EIA)

Product Details

Immunogen:	This antibody is generated from rabbits immunized with a KLH conjugated synthetic peptide selected from the C-terminal region of human CDH6.
Isotype:	Ig Fraction
Specificity:	This antibody detects K Cadherin at C-term.
Purification:	Protein A column, followed by peptide affinity purification.

Target Details

Target:	CDH6
Alternative Name:	Cadherin-6 (CDH6 Products)

Target Details

Background:	CDH6 is a type II classical cadherin from the cadherin superfamily. It is a calcium dependent cell-cell adhesion membrane glycoprotein comprised of five extracellular cadherin repeats, a transmembrane region and a highly conserved cytoplasmic tail. Cadherins mediate cell-cell binding in a homophilic manner, contributing to the sorting of heterogeneous cell types and the maintenance of orderly structures such as epithelium. Strong transcriptional expression of the CDH6 gene has been observed in hepatocellular and renal carcinoma cell lines, suggesting a possible role in metastasis and invasion. Synonyms: CDH6, Cadherin K, K-Cadherin, Kidney cadherin
Molecular Weight:	88309 Da
Gene ID:	1004, 9606
UniProt:	P55285
Pathways:	Cell-Cell Junction Organization

Application Details

Application Notes:	ELISA 1: 1,000. Western blot 1: 50 - 1: 100. Immunohistochemistry 1: 10 - 1: 50. Other applications not tested. Optimal dilutions are dependent on conditions and should be determined by the user.
Restrictions:	For Research Use only

Handling

Format:	Liquid
Concentration:	0.25 mg/mL
Buffer:	PBS with 0.09 % (W/V) sodium azide
Preservative:	Sodium azide
Precaution of Use:	This product contains sodium azide: a POISONOUS AND HAZARDOUS SUBSTANCE which should be handled by trained staff only.
Handling Advice:	Avoid repeated freezing and thawing.
Storage:	4 °C/-20 °C
Storage Comment:	Store the antibody at 2 - 8 °C up to one month or (in aliquots) at -20 °C for longer.

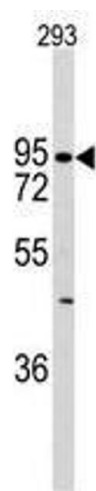


Image 1.

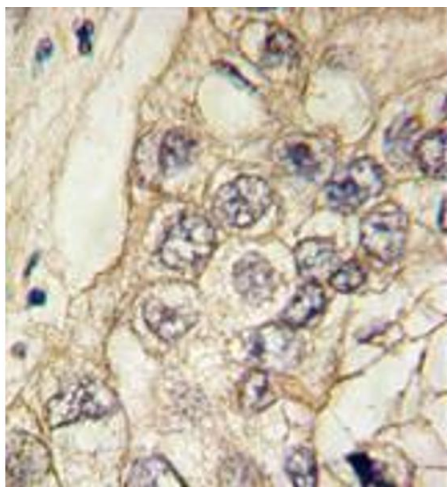


Image 2.