

Datasheet for ABIN356923
anti-CDH15 antibody (C-Term)[Go to Product page](#)

2 Images

Overview

| | |
|----------------------|--|
| Quantity: | 0.4 mL |
| Target: | CDH15 |
| Binding Specificity: | C-Term |
| Reactivity: | Human |
| Host: | Rabbit |
| Clonality: | Polyclonal |
| Conjugate: | This CDH15 antibody is un-conjugated |
| Application: | Western Blotting (WB), Immunohistochemistry (Paraffin-embedded Sections) (IHC (p)), Enzyme Immunoassay (EIA) |

Product Details

| | |
|---------------|---|
| Immunogen: | This antibody is generated from rabbits immunized with a KLH conjugated synthetic peptide selected from the C-terminal region of human CDH15. |
| Isotype: | Ig Fraction |
| Specificity: | This antibody detects M Cadherin at C-term. |
| Purification: | Protein A column, followed by peptide affinity purification |

Target Details

| | |
|-------------------|--|
| Target: | CDH15 |
| Alternative Name: | Cadherin-15 (CDH15 Products) |

Target Details

| | |
|-------------|---|
| Background: | CDH15 is a member of the cadherin superfamily of genes, encoding calcium-dependent intercellular adhesion glycoproteins. Cadherins consist of an extracellular domain containing 5 cadherin domains, a transmembrane region, and a conserved cytoplasmic domain. Transcripts from this particular cadherin are expressed in myoblasts and upregulated in myotubule-forming cells. This protein is thought to be essential for the control of morphogenetic processes, specifically myogenesis, and may provide a trigger for terminal muscle cell differentiation. Synonyms: CDH14, CDH15, CDH3, Cadherin M, Cadherin-14, M-Cadherin, Muscle cadherin |
|-------------|---|

| | |
|-------------------|--|
| Molecular Weight: | 88916 Da predicted from amino acid sequence. |
|-------------------|--|

| | |
|----------|------------|
| Gene ID: | 1013, 9606 |
|----------|------------|

| | |
|----------|------------------------|
| UniProt: | P55291 |
|----------|------------------------|

Application Details

| | |
|--------------------|---|
| Application Notes: | ELISA 1: 1,000. Western blot 1: 50 - 1: 100. Immunohistochemistry 1: 10 - 1: 50. Other applications not tested. Optimal dilutions are dependent on conditions and should be determined by the user. |
|--------------------|---|

| | |
|---------------|-----------------------|
| Restrictions: | For Research Use only |
|---------------|-----------------------|

Handling

| | |
|---------|--------|
| Format: | Liquid |
|---------|--------|

| | |
|----------------|------------|
| Concentration: | 0.25 mg/mL |
|----------------|------------|

| | |
|---------|------------------------------------|
| Buffer: | PBS with 0.09 % (W/V) sodium azide |
|---------|------------------------------------|

| | |
|---------------|--------------|
| Preservative: | Sodium azide |
|---------------|--------------|

| | |
|--------------------|--|
| Precaution of Use: | This product contains sodium azide: a POISONOUS AND HAZARDOUS SUBSTANCE which should be handled by trained staff only. |
|--------------------|--|

| | |
|------------------|--------------------------------------|
| Handling Advice: | Avoid repeated freezing and thawing. |
|------------------|--------------------------------------|

| | |
|----------|-------------|
| Storage: | 4 °C/-20 °C |
|----------|-------------|

| | |
|------------------|---|
| Storage Comment: | Store the antibody at 2 - 8 °C up to one month or (in aliquots) at -20 °C for longer. |
|------------------|---|

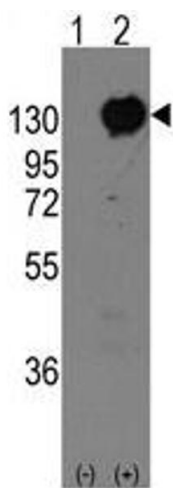


Image 1.

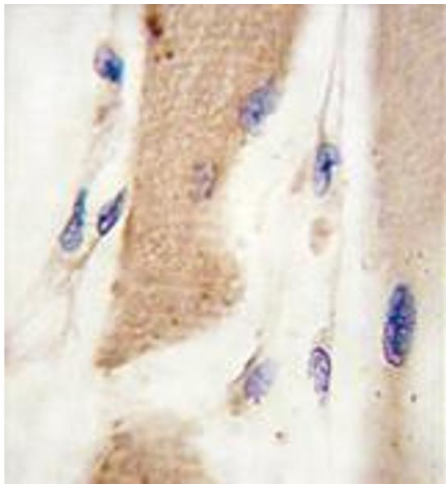


Image 2.