

Datasheet for ABIN356935

anti-Stanniocalcin 2 antibody (N-Term)**2** Images[Go to Product page](#)

Overview

Quantity:	0.4 mL
Target:	Stanniocalcin 2 (STC2)
Binding Specificity:	N-Term
Reactivity:	Human, Mouse
Host:	Rabbit
Clonality:	Polyclonal
Conjugate:	This Stanniocalcin 2 antibody is un-conjugated
Application:	Western Blotting (WB), Immunohistochemistry (Paraffin-embedded Sections) (IHC (p)), Enzyme Immunoassay (EIA)

Product Details

Immunogen:	KLH conjugated synthetic peptide selected from the N-terminal region of human STC2
Isotype:	Ig Fraction
Specificity:	This antibody detects STC2 at N-term.
Purification:	Protein A column, eluted with high and low pH buffers and neutralized immediately, followed by dialysis against PBS.

Target Details

Target:	Stanniocalcin 2 (STC2)
Alternative Name:	Stanniocalcin 2 / STC2 (STC2 Products)

Target Details

Background:	STC2 is a secreted, homodimeric glycoprotein that is expressed in a wide variety of tissues and may have autocrine or paracrine functions. The encoded protein has 10 of its 15 cysteine residues conserved among stanniocalcin family members and is phosphorylated by casein kinase 2 exclusively on its serine residues. Its C-terminus contains a cluster of histidine residues which may interact with metal ions. The protein may play a role in the regulation of renal and intestinal calcium and phosphate transport, cell metabolism, or cellular calcium/phosphate homeostasis. Constitutive overexpression of human stanniocalcin 2 in mice resulted in pre- and postnatal growth restriction, reduced bone and skeletal muscle growth, and organomegaly. Expression is induced by estrogen and altered in some breast cancers.Synonyms: STC-2, STC-related protein, STCRP, Stanniocalcin-2, Stanniocalcin-related protein
Molecular Weight:	33249 Da
Gene ID:	8614, 9606
UniProt:	O76061
Pathways:	Hormone Activity , ER-Nucleus Signaling , SARS-CoV-2 Protein Interactome

Application Details

Application Notes:	ELISA1: 1,000. Western blotting 1: 100 - 1: 500. Immunohistochemistry: 1: 50 - 1: 100. Other applications not tested. Optimal dilutions are dependent on conditions and should be determined by the user.
Restrictions:	For Research Use only

Handling

Format:	Liquid
Concentration:	0.25 mg/mL
Buffer:	PBS with 0.09 % (W/V) sodium azide
Preservative:	Sodium azide
Precaution of Use:	This product contains sodium azide: a POISONOUS AND HAZARDOUS SUBSTANCE which should be handled by trained staff only.
Handling Advice:	Avoid repeated freezing and thawing.
Storage:	4 °C/-20 °C

Handling

Storage Comment: Store the antibody at 2 - 8 °C up to one month or (in aliquots) at -20 °C for longer.

Images

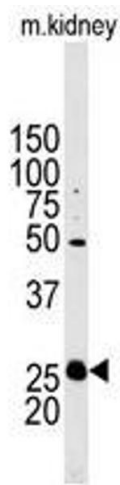


Image 1.

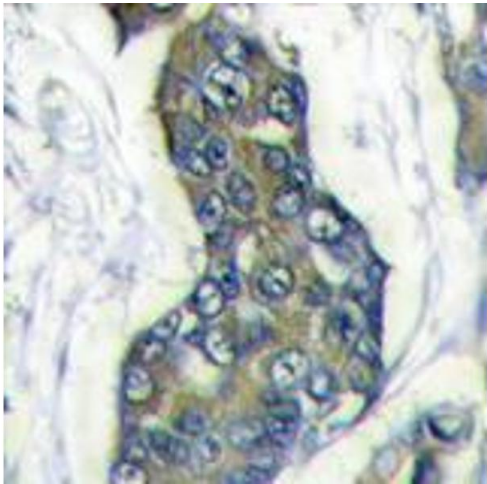


Image 2.