

Datasheet for ABIN356936  
**anti-SSR1 antibody (N-Term)**[Go to Product page](#)

## 2 Images

## Overview

Quantity:	0.4 mL
Target:	SSR1
Binding Specificity:	N-Term
Reactivity:	Human
Host:	Rabbit
Clonality:	Polyclonal
Conjugate:	This SSR1 antibody is un-conjugated
Application:	Western Blotting (WB), Immunohistochemistry (Paraffin-embedded Sections) (IHC (p)), Enzyme Immunoassay (EIA)

## Product Details

Immunogen:	This antibody is generated from rabbits immunized with a KLH conjugated synthetic peptide selected from the N-terminal region of human SSR1.
Isotype:	Ig Fraction
Specificity:	This antibody detects SSR1 at N-term.
Purification:	Prepared by Saturated Ammonium Sulfate (SAS) precipitation followed by dialysis against PBS.

## Target Details

Target:	SSR1
Alternative Name:	SSR1 / TRAPA ( <a href="#">SSR1 Products</a> )

## Target Details

Background:	The signal sequence receptor (SSR) is a glycosylated endoplasmic reticulum (ER) membrane receptor associated with protein translocation across the ER membrane. The SSR consists of 2 subunits, a 34-kD glycoprotein encoded by this gene and a 22-kD glycoprotein. This gene generates several mRNA species as a result of complex alternative polyadenylation. This gene is unusual in that it utilizes arrays of polyA signal sequences that are exclusively non-canonical. Synonyms: SSR-alpha, Signal sequence receptor subunit alpha, TRAP-alpha, Translocon-associated protein subunit alpha
Molecular Weight:	32235 Da
Gene ID:	6745, 9606
UniProt:	<a href="#">P43307</a>
Pathways:	<a href="#">ER-Nucleus Signaling</a>

## Application Details

Application Notes:	ELISA 1: 1,000. Western blot 1: 50 - 1: 100. Immunohistochemistry 1: 10 - 1: 50. Other applications not tested. Optimal dilutions are dependent on conditions and should be determined by the user.
Restrictions:	For Research Use only

## Handling

Format:	Liquid
Concentration:	0.25 mg/mL
Buffer:	PBS with 0.09 % (W/V) sodium azide
Preservative:	Sodium azide
Precaution of Use:	This product contains sodium azide: a POISONOUS AND HAZARDOUS SUBSTANCE which should be handled by trained staff only.
Handling Advice:	Avoid repeated freezing and thawing.
Storage:	4 °C/-20 °C
Storage Comment:	Store the antibody at 2 - 8 °C up to one month or (in aliquots) at -20 °C for longer.

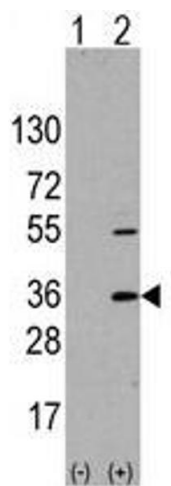


Image 1.

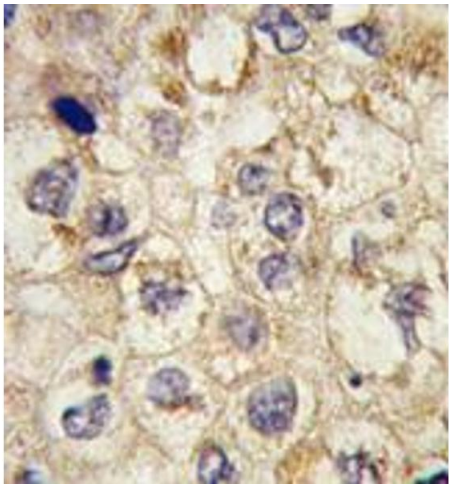


Image 2.