

Datasheet for ABIN356941
anti-CDCA8 antibody (Center)[Go to Product page](#)

2 Images

Overview

Quantity:	0.4 mL
Target:	CDCA8
Binding Specificity:	Center
Reactivity:	Human
Host:	Rabbit
Clonality:	Polyclonal
Conjugate:	This CDCA8 antibody is un-conjugated
Application:	Western Blotting (WB), Immunohistochemistry (Paraffin-embedded Sections) (IHC (p)), Enzyme Immunoassay (EIA)

Product Details

Immunogen:	This antibody is generated from rabbits immunized with a KLH conjugated synthetic peptide selected from the center region of human CDCA8.
Isotype:	Ig Fraction
Specificity:	This antibody detects CDCA8 at center.
Purification:	Protein A column, eluted with high and low pH buffers and neutralized immediately, followed by dialysis against PBS

Target Details

Target:	CDCA8
Alternative Name:	CDCA8 / Borealin (CDCA8 Products)

Target Details

Background:	CDCA8 is a component of the chromosomal passenger complex (CPC) required for stability of the bipolar mitotic spindle. The CPC complex, a key regulator of mitosis, has essential functions at the centromere in ensuring correct chromosome alignment and segregation and is required for chromatin-induced microtubule stabilization and spindle assembly. In the complex, CDCA8 may be required to direct the CPC to centromeric DNA.Synonyms: Cell division cycle-associated protein 8, Dasra-B, PESCRG3, Pluripotent embryonic stem cell-related gene 3 protein, hDasra-B
Molecular Weight:	31323 Da
Gene ID:	55143, 9606
UniProt:	Q53HL2
Pathways:	Cell Division Cycle, M Phase

Application Details

Application Notes:	ELISA 1: 1,000. Western blotting 1: 100 - 1: 500. Immunohistochemistry 1: 10 - 1: 50. Other applications not tested. Optimal dilutions are dependent on conditions and should be determined by the user.
Restrictions:	For Research Use only

Handling

Format:	Liquid
Concentration:	0.25 mg/mL
Buffer:	PBS with 0.09 % (W/V) sodium azide
Preservative:	Sodium azide
Precaution of Use:	This product contains sodium azide: a POISONOUS AND HAZARDOUS SUBSTANCE which should be handled by trained staff only.
Handling Advice:	Avoid repeated freezing and thawing.
Storage:	4 °C/-20 °C
Storage Comment:	Store the antibody at 2 - 8 °C up to one month or (in aliquots) at -20 °C for longer.



Image 1.

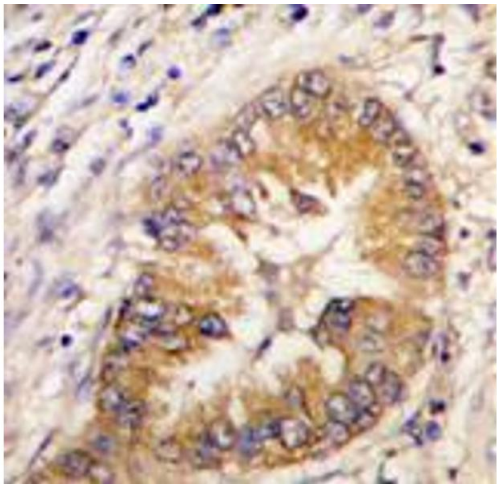


Image 2.