

Datasheet for ABIN356944

anti-PSMA5 antibody (N-Term)[Go to Product page](#)**2** Images

Overview

Quantity:	0.4 mL
Target:	PSMA5
Binding Specificity:	N-Term
Reactivity:	Human
Host:	Rabbit
Clonality:	Polyclonal
Conjugate:	This PSMA5 antibody is un-conjugated
Application:	Western Blotting (WB), Immunohistochemistry (Paraffin-embedded Sections) (IHC (p)), Enzyme Immunoassay (EIA)

Product Details

Immunogen:	This antibody is generated from rabbits immunized with a KLH conjugated synthetic peptide selected from the N-terminal region of human PSMA5.
Isotype:	Ig Fraction
Specificity:	This antibody detects PSMA5 at N-term.
Purification:	Protein A column, eluted with high and low pH buffers and neutralized immediately, followed by dialysis against PBS

Target Details

Target:	PSMA5
Alternative Name:	PSMA5 (PSMA5 Products)

Target Details

Background:	<p>The proteasome is a multicatalytic proteinase complex with a highly ordered ring-shaped 20S core structure. The core structure is composed of 4 rings of 28 non-identical subunits, 2 rings are composed of 7 alpha subunits and 2 rings are composed of 7 beta subunits. Proteasomes are distributed throughout eukaryotic cells at a high concentration and cleave peptides in an ATP/ubiquitin-dependent process in a non-lysosomal pathway. An essential function of a modified proteasome, the immunoproteasome, is the processing of class I MHC peptides. PMA5 is a member of the peptidase T1A family, that is a 20S core alpha subunit. Synonyms: Macropain zeta chain, Multicatalytic endopeptidase complex zeta chain, Proteasome 20S alpha 5, Proteasome subunit alpha type-5, Proteasome zeta chain</p>
Molecular Weight:	26280 Da
Gene ID:	5686, 9606
UniProt:	P28066
Pathways:	Mitotic G1-G1/S Phases , DNA Replication , Synthesis of DNA

Application Details

Application Notes:	<p>ELISA 1: 1,000. Western blot 1: 50 - 1: 100. Immunohistochemistry 1: 50.</p> <p>Other applications not tested.</p> <p>Optimal dilutions are dependent on conditions and should be determined by the user.</p>
Restrictions:	For Research Use only

Handling

Format:	Liquid
Concentration:	0.25 mg/mL
Buffer:	PBS with 0.09 % (W/V) sodium azide
Preservative:	Sodium azide
Precaution of Use:	This product contains sodium azide: a POISONOUS AND HAZARDOUS SUBSTANCE which should be handled by trained staff only.
Handling Advice:	Avoid repeated freezing and thawing.
Storage:	4 °C/-20 °C
Storage Comment:	Store the antibody at 2 - 8 °C up to one month or (in aliquots) at -20 °C for longer.

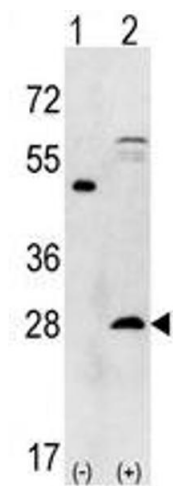


Image 1.

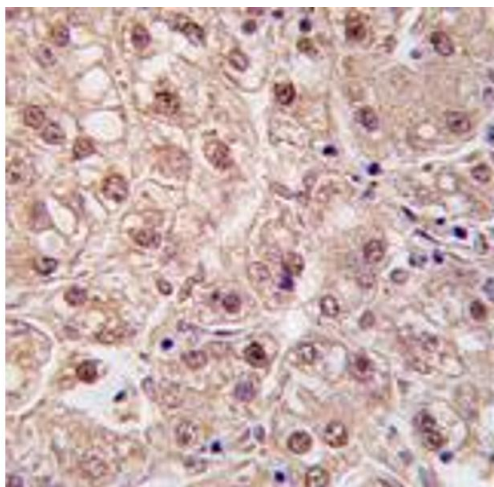


Image 2.