

Datasheet for ABIN356948  
**anti-PYGM antibody (C-Term)**[Go to Product page](#)

2 Images

1 Publication

## Overview

Quantity:	0.4 mL
Target:	PYGM
Binding Specificity:	C-Term
Reactivity:	Human
Host:	Rabbit
Clonality:	Polyclonal
Conjugate:	This PYGM antibody is un-conjugated
Application:	Western Blotting (WB), Enzyme Immunoassay (EIA)

## Product Details

Immunogen:	This antibody is generated from rabbits immunized with a KLH conjugated synthetic peptide selected from the C-terminal region of human PYGM.
Isotype:	Ig Fraction
Specificity:	This antibody detects PYGM at C-term.
Purification:	Protein A column, eluted with high and low pH buffers and neutralized immediately, followed by dialysis against PBS

## Target Details

Target:	PYGM
Alternative Name:	Glycogen Phosphorylase Muscle Form ( <a href="#">PYGM Products</a> )

## Target Details

Background:	PYGM catalyzes and regulates the breakdown of glycogen to glucose-1-phosphate. Defects in PYGM are the cause of glycogen storage disease type 5 (GSD5), also known as McArdle disease. GSD5 is a metabolic disorder resulting in myopathy characterized by exercise intolerance, cramps, muscle weakness and recurrent myoglobinuria.Synonyms: GPMM, Myophosphorylase, PYGM, Phosphorylase A, Phosphorylase B
Molecular Weight:	97092 Da
Gene ID:	5837, 9606
UniProt:	<a href="#">P11217</a>
Pathways:	<a href="#">Cellular Glucan Metabolic Process</a>

## Application Details

Application Notes:	ELISA 1: 1,000. Western blot 1: 100 - 1: 500. Immunohistochemistry 1: 10 - 1: 50. Other applications not tested. Optimal dilutions are dependent on conditions and should be determined by the user.
Restrictions:	For Research Use only

## Handling

Format:	Liquid
Concentration:	0.25 mg/mL
Buffer:	PBS with 0.09 % (W/V) sodium azide
Preservative:	Sodium azide
Precaution of Use:	This product contains sodium azide: a POISONOUS AND HAZARDOUS SUBSTANCE which should be handled by trained staff only.
Handling Advice:	Avoid repeated freezing and thawing.
Storage:	4 °C/-20 °C
Storage Comment:	Store the antibody at 2 - 8 °C up to one month or (in aliquots) at -20 °C for longer.

## Publications

Product cited in:	Hathout, Marathi, Rayavarapu, Zhang, Brown, Seol, Gordish-Dressman, Cirak, Bello, Nagaraju, Partridge, Hoffman, Takeda, Mah, Henricson, McDonald: "Discovery of serum protein
-------------------	---

biomarkers in the mdx mouse model and cross-species comparison to Duchenne muscular dystrophy patients." in: **Human molecular genetics**, Vol. 23, Issue 24, pp. 6458-69, (2015) ([PubMed](#)).

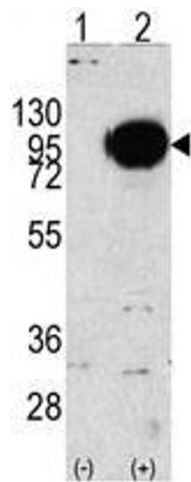


Image 1.

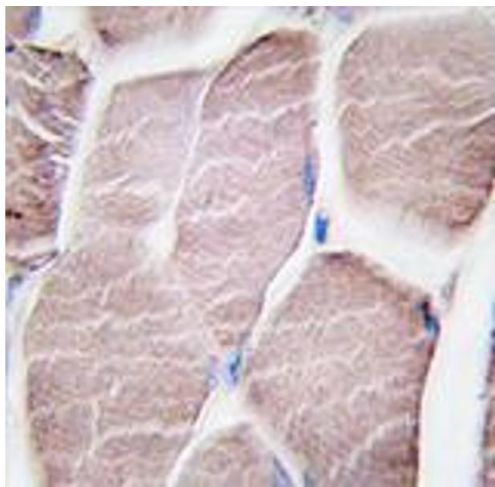


Image 2.