

Datasheet for ABIN356959
anti-TRAPPC4 antibody (N-Term)

2 Images

[Go to Product page](#)

Overview

| | |
|----------------------|--|
| Quantity: | 0.4 mL |
| Target: | TRAPPC4 |
| Binding Specificity: | N-Term |
| Reactivity: | Human |
| Host: | Rabbit |
| Clonality: | Polyclonal |
| Conjugate: | This TRAPPC4 antibody is un-conjugated |
| Application: | Western Blotting (WB), Immunohistochemistry (Paraffin-embedded Sections) (IHC (p)), Enzyme Immunoassay (EIA) |

Product Details

| | |
|---------------|---|
| Immunogen: | This antibody is generated from rabbits immunized with a KLH conjugated synthetic peptide selected from the N-terminal region of human TRAPPC4. |
| Isotype: | Ig Fraction |
| Specificity: | This antibody detects TRAPPC4 at N-term. |
| Purification: | Protein A column, eluted with high and low pH buffers and neutralized immediately, followed by dialysis against PBS. |

Target Details

| | |
|-------------------|--|
| Target: | TRAPPC4 |
| Alternative Name: | TRAPPC4 (TRAPPC4 Products) |

Target Details

Background: TRAPPC4 is part of the multisubunit TRAPP (transport protein particle) complex and interacts with SDC2. It may play a role in vesicular transport from endoplasmic reticulum to Golgi. TRAPP proteins are involved in tethering during vesicle transport. Synonyms: Hematopoietic stem/progenitor cell protein 172, SBDN, Synbindin, TRS23 homolog, Trafficking protein particle complex subunit 4

Molecular Weight: 24209 Da

Gene ID: 51399, 9606

UniProt: [Q9Y296](#)

Application Details

Application Notes: ELISA 1: 1,000. Western blotting 1: 50 - 1: 100. Immunohistochemistry 1: 10 - 1: 50.
Other applications not tested.
Optimal dilutions are dependent on conditions and should be determined by the user.

Restrictions: For Research Use only

Handling

Format: Liquid

Concentration: 0.25 mg/mL

Buffer: PBS with 0.09 % (W/V) sodium azide

Preservative: Sodium azide

Precaution of Use: This product contains sodium azide: a POISONOUS AND HAZARDOUS SUBSTANCE which should be handled by trained staff only.

Handling Advice: Avoid repeated freezing and thawing.

Storage: 4 °C/-20 °C

Storage Comment: Store the antibody at 2 - 8 °C up to one month or (in aliquots) at -20 °C for longer.

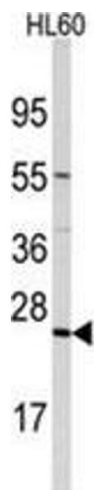


Image 1.

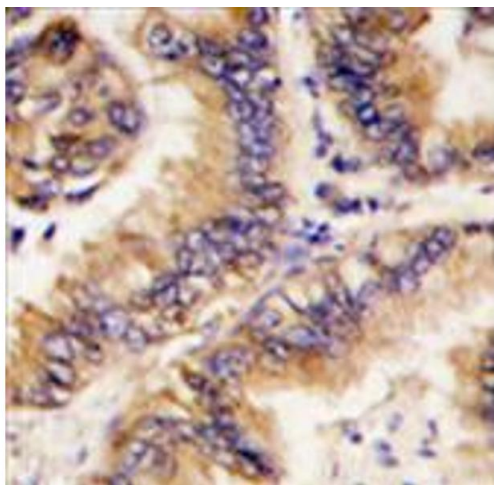


Image 2.