

Datasheet for ABIN356970
anti-PDE8A antibody (Middle Region)

2 Images

[Go to Product page](#)

Overview

| | |
|----------------------|--|
| Quantity: | 0.4 mL |
| Target: | PDE8A |
| Binding Specificity: | Middle Region |
| Reactivity: | Human |
| Host: | Rabbit |
| Clonality: | Polyclonal |
| Conjugate: | This PDE8A antibody is un-conjugated |
| Application: | Western Blotting (WB), Immunohistochemistry (Paraffin-embedded Sections) (IHC (p)), Enzyme Immunoassay (EIA) |

Product Details

| | |
|---------------|---|
| Immunogen: | This antibody is generated from rabbits immunized with a KLH conjugated synthetic peptide selected from the Center region of human PDE8A. |
| Isotype: | Ig Fraction |
| Specificity: | This antibody detects PDE8A at Center. |
| Purification: | Protein A column, eluted with high and low pH buffers and neutralized immediately, followed by dialysis against PBS |

Target Details

| | |
|-------------------|--|
| Target: | PDE8A |
| Alternative Name: | PDE8A (PDE8A Products) |

Target Details

| | |
|-------------------|--|
| Background: | PDE8A plays a role in signal transduction by regulating the intracellular concentration of cyclic nucleotides. This phosphodiesterase, which has a high affinity for cAMP, may be involved in maintaining basal levels of the cyclic nucleotide and/or in the cAMP regulation of germ cell development.Synonyms: 5'-cyclic phosphodiesterase 8A, FLJ16150, High affinity cAMP-specific and IBMX-insensitive 3', HsT19550, Phosphodiesterase 8A, cAMP-specific cyclic nucleotide phosphodiesterase 8A |
| Molecular Weight: | 93173 Da |
| Gene ID: | 5151, 9606 |
| UniProt: | O60658 |
| Pathways: | cAMP Metabolic Process |

Application Details

| | |
|--------------------|---|
| Application Notes: | ELISA 1: 1,000. Western blot 1: 50 - 1: 100. Immunohistochemistry 1: 50. Other applications not tested. Optimal dilutions are dependent on conditions and should be determined by the user. |
| Restrictions: | For Research Use only |

Handling

| | |
|--------------------|--|
| Format: | Liquid |
| Concentration: | 0.25 mg/mL |
| Buffer: | PBS with 0.09 % (W/V) sodium azide |
| Preservative: | Sodium azide |
| Precaution of Use: | This product contains sodium azide: a POISONOUS AND HAZARDOUS SUBSTANCE which should be handled by trained staff only. |
| Handling Advice: | Avoid repeated freezing and thawing. |
| Storage: | 4 °C/-20 °C |
| Storage Comment: | Store the antibody at 2 - 8 °C up to one month or (in aliquots) at -20 °C for longer. |

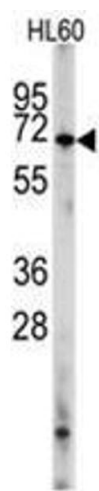


Image 1.

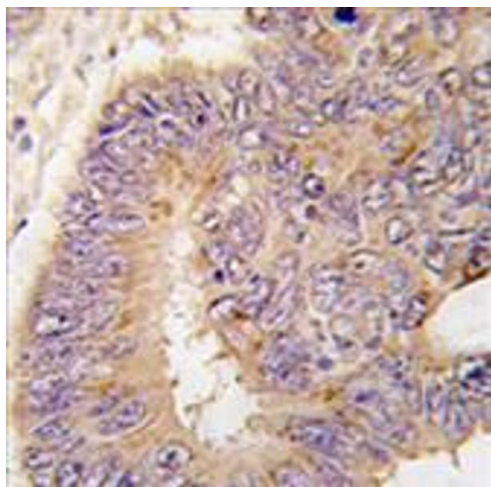


Image 2.