



[Go to Product page](#)

Datasheet for ABIN356985

anti-ALDH5A1 antibody (N-Term)

2 Images

Overview

Quantity:	0.4 mL
Target:	ALDH5A1
Binding Specificity:	N-Term
Reactivity:	Human
Host:	Rabbit
Clonality:	Polyclonal
Conjugate:	This ALDH5A1 antibody is un-conjugated
Application:	Western Blotting (WB), Immunohistochemistry (Paraffin-embedded Sections) (IHC (p))

Product Details

Immunogen:	This antibody is generated from rabbits immunized with a KLH conjugated synthetic peptide selected from the N-terminal region of human ALDH5A1.
Isotype:	Ig Fraction
Specificity:	This antibody detects ALDH5A1 at N-term.
Purification:	Protein A column, followed by peptide affinity purification

Target Details

Target:	ALDH5A1
Alternative Name:	ALDH5A1 / SSADH (ALDH5A1 Products)
Background:	ALDH5A1 belongs to the aldehyde dehydrogenase family of proteins. This protein functions as

Target Details

a mitochondrial NAD(+)-dependent succinic semialdehyde dehydrogenase. A deficiency of this enzyme, known as 4-hydroxybutyricaciduria, is a rare inborn error in the metabolism of the neurotransmitter 4-aminobutyric acid (GABA). In response to the defect, physiologic fluids from patients accumulate GHB, a compound with numerous neuromodulatory properties. Synonyms: Aldehyde dehydrogenase family 5 member A1, NAD(+)-dependent succinic semialdehyde dehydrogenase, Succinate-semialdehyde dehydrogenase, mitochondrial

Molecular Weight: 57215 Da

Gene ID: 7915, 9606

UniProt: [P51649](#)

Pathways: [Monocarboxylic Acid Catabolic Process](#)

Application Details

Application Notes: ELISA 1: 1,000. Western blot 1: 50 - 1: 100. Immunohistochemistry 1: 10 - 1: 50.
Other applications not tested.
Optimal dilutions are dependent on conditions and should be determined by the user.

Restrictions: For Research Use only

Handling

Format: Liquid

Concentration: 0.25 mg/mL

Buffer: PBS with 0.09 % (W/V) sodium azide

Preservative: Sodium azide

Precaution of Use: This product contains sodium azide: a POISONOUS AND HAZARDOUS SUBSTANCE which should be handled by trained staff only.

Handling Advice: Avoid repeated freezing and thawing.

Storage: 4 °C/-20 °C

Storage Comment: Store the antibody at 2 - 8 °C up to one month or (in aliquots) at -20 °C for longer.

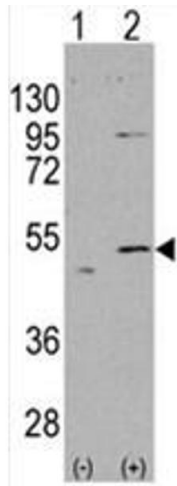


Image 1.

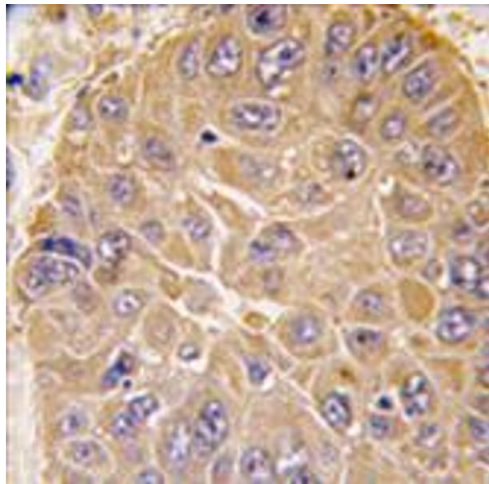


Image 2.