

Datasheet for ABIN357007
anti-DDX3X antibody (C-Term)



[Go to Product page](#)

2 Images

Overview

Quantity:	0.4 mL
Target:	DDX3X
Binding Specificity:	C-Term
Reactivity:	Human
Host:	Rabbit
Clonality:	Polyclonal
Conjugate:	This DDX3X antibody is un-conjugated
Application:	Western Blotting (WB), Immunohistochemistry (Paraffin-embedded Sections) (IHC (p)), Enzyme Immunoassay (EIA)

Product Details

Immunogen:	This antibody is generated from rabbits immunized with a KLH conjugated synthetic peptide selected from the C-terminal region of human DDX3.
Isotype:	Ig Fraction
Purification:	Protein A column, eluted with high and low pH buffers and neutralized immediately, followed by dialysis against PBS

Target Details

Target:	DDX3X
Alternative Name:	DDX3X (DDX3X Products)
Background:	DEAD box proteins, characterized by the conserved motif Asp-Glu-Ala-Asp (DEAD), are putative

Target Details

RNA helicases. They are implicated in a number of cellular processes involving alteration of RNA secondary structure such as translation initiation, nuclear and mitochondrial splicing, and ribosome and spliceosome assembly. Based on their distribution patterns, some members of this family are believed to be involved in embryogenesis, spermatogenesis, and cellular growth and division. DDX3 is a DEAD box protein, which interacts specifically with hepatitis C virus core protein resulting a change in intracellular location. The DDX3 gene has a homolog located in the nonrecombining region of the Y chromosome. The protein sequence is 91 % identical between this gene and the Y-linked homolog. Synonyms: ATP-dependent RNA helicase DDX3X, DBX, DDX3, DEAD box X isoform, DEAD box protein 3 X-chromosomal, DEAD3, Embryonic RNA helicase, HLP2, Helicase-like protein 2

Molecular Weight: 73113 Da

Gene ID: 1654, 9606

UniProt: [O00571](#)

Pathways: [Ribonucleoprotein Complex Subunit Organization](#), [Positive Regulation of Endopeptidase Activity](#), [Negative Regulation of intrinsic apoptotic Signaling](#), [Ribosome Assembly](#)

Application Details

Application Notes: ELISA 1: 1,000. Western blot 1: 50 - 1: 100. Immunohistochemistry 1: 10 - 1: 50.
Other applications not tested.
Optimal dilutions are dependent on conditions and should be determined by the user.

Restrictions: For Research Use only

Handling

Format: Liquid

Concentration: 0.25 mg/mL

Buffer: PBS with 0.09 % (W/V) sodium azide

Preservative: Sodium azide

Precaution of Use: This product contains sodium azide: a POISONOUS AND HAZARDOUS SUBSTANCE which should be handled by trained staff only.

Handling Advice: Avoid repeated freezing and thawing.

Storage: 4 °C/-20 °C

Handling

Storage Comment: Store the antibody at 2 - 8 °C up to one month or (in aliquots) at -20 °C for longer.

Images

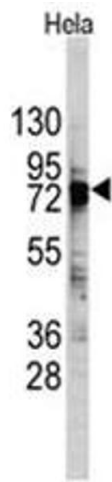


Image 1.

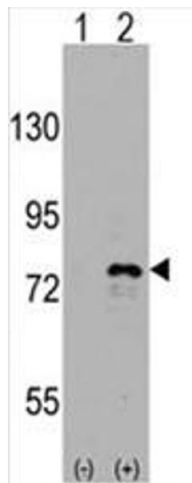


Image 2.