

Datasheet for ABIN357009  
**anti-KIT Ligand antibody (C-Term)**



[Go to Product page](#)

3 Images

## Overview

Quantity:	0.4 mL
Target:	KIT Ligand (KITLG)
Binding Specificity:	C-Term
Reactivity:	Human
Host:	Rabbit
Clonality:	Polyclonal
Conjugate:	This KIT Ligand antibody is un-conjugated
Application:	Western Blotting (WB), Flow Cytometry (FACS), Immunofluorescence (IF), Enzyme Immunoassay (EIA)

## Product Details

Immunogen:	KLH conjugated synthetic peptide selected from the C-terminal region of human KITLG
Isotype:	Ig Fraction
Specificity:	This antibody detects SCF (KITLG) at C-term.
Purification:	Protein A column, eluted with high and low pH buffers and neutralized immediately, followed by dialysis against PBS

## Target Details

Target:	KIT Ligand (KITLG)
Alternative Name:	KITLG / SCF ( <a href="#">KITLG Products</a> )

## Target Details

---

Background:	KITLG is the ligand of the tyrosine-kinase receptor encoded by the KIT locus. This ligand is a pleiotropic factor that acts in utero in germ cell and neural cell development, and hematopoiesis, all believed to reflect a role in cell migration. In adults, it functions pleiotropically, while mostly noted for its continued requirement in hematopoiesis. Synonyms: KITL, Kit ligand, MGF, Mast cell growth factor, Stem cell factor, c-Kit ligand
Molecular Weight:	30899 Da
Gene ID:	4254, 9606
UniProt:	<a href="#">P21583</a>
Pathways:	<a href="#">RTK Signaling</a> , <a href="#">Fc-epsilon Receptor Signaling Pathway</a> , <a href="#">EGFR Signaling Pathway</a> , <a href="#">Neurotrophin Signaling Pathway</a>

## Application Details

---

Application Notes:	ELISA 1: 1,000. Western blot 1: 50 - 1: 100. Immunofluorescence 1: 10 - 1: 50. Other applications not tested. Optimal dilutions are dependent on conditions and should be determined by the user.
Restrictions:	For Research Use only

## Handling

---

Format:	Liquid
Concentration:	0.25 mg/mL
Buffer:	PBS with 0.09 % (W/V) sodium azide
Preservative:	Sodium azide
Precaution of Use:	This product contains sodium azide: a POISONOUS AND HAZARDOUS SUBSTANCE which should be handled by trained staff only.
Handling Advice:	Avoid repeated freezing and thawing.
Storage:	4 °C/-20 °C
Storage Comment:	Store the antibody at 2 - 8 °C up to one month or (in aliquots) at -20 °C for longer.

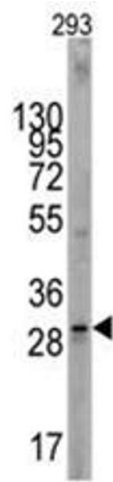


Image 1.

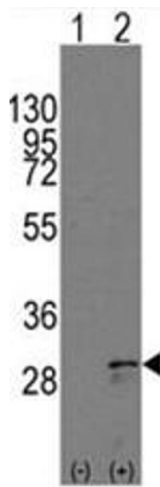


Image 2.

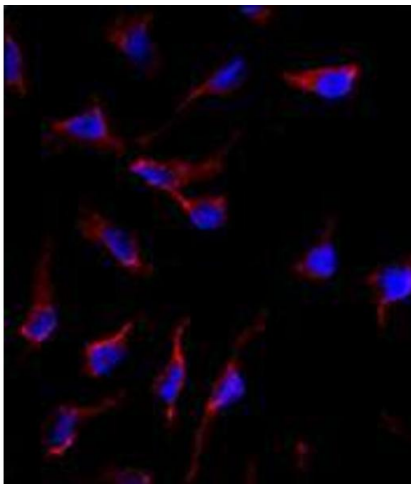


Image 3.