



[Go to Product page](#)

Datasheet for ABIN357076

anti-Dickkopf-Like 1 (DKKL1) (C-Term) antibody

2 Images

Overview

Quantity:	0.4 mL
Target:	Dickkopf-Like 1 (DKKL1)
Binding Specificity:	C-Term
Reactivity:	Human, Mouse
Host:	Rabbit
Clonality:	Polyclonal
Conjugate:	Un-conjugated
Application:	Western Blotting (WB), Immunohistochemistry (Paraffin-embedded Sections) (IHC (p)), Enzyme Immunoassay (EIA)

Product Details

Immunogen:	This antibody is generated from rabbits immunized with a KLH conjugated synthetic peptide selected from the C-terminal region of human DKKL1.
Isotype:	Ig Fraction
Specificity:	This antibody detects DKKL1 at C-term.
Purification:	Protein G column, eluted with high and low pH buffers and neutralized immediately, followed by dialysis against PBS

Target Details

Target:	Dickkopf-Like 1 (DKKL1)
Alternative Name:	Dickkopf-Like Protein 1 (DKKL1 Products)

Target Details

Background:	The dickkopf protein family interacts with the Wnt signaling pathway and its members are characterized by two conserved cysteine-rich domains. This gene encodes a secreted protein that has high similarity to the N-terminus of the dickkopf-3 protein and moderate similarity to that protein's C-terminus though the C-terminal cysteine residues are not conserved. Synonyms: CT34, Cancer/testis antigen 34, DKKL1, Protein soggy-1, SGY1
Molecular Weight:	27007 Da
Gene ID:	27120, 9606
UniProt:	Q9UK85
Pathways:	Positive Regulation of fat Cell Differentiation

Application Details

Application Notes:	ELISA 1: 1,000. Western blot 1: 100 - 1: 500. Immunohistochemistry 1: 50 - 1: 100. Other applications not tested. Optimal dilutions are dependent on conditions and should be determined by the user.
--------------------	---

Restrictions:	For Research Use only
---------------	-----------------------

Handling

Format:	Liquid
Concentration:	0.25 mg/mL
Buffer:	PBS with 0.09 % (W/V) sodium azide
Preservative:	Sodium azide
Precaution of Use:	This product contains sodium azide: a POISONOUS AND HAZARDOUS SUBSTANCE which should be handled by trained staff only.
Handling Advice:	Avoid repeated freezing and thawing.
Storage:	4 °C/-20 °C
Storage Comment:	Store the antibody at 2 - 8 °C up to one month or (in aliquots) at -20 °C for longer.

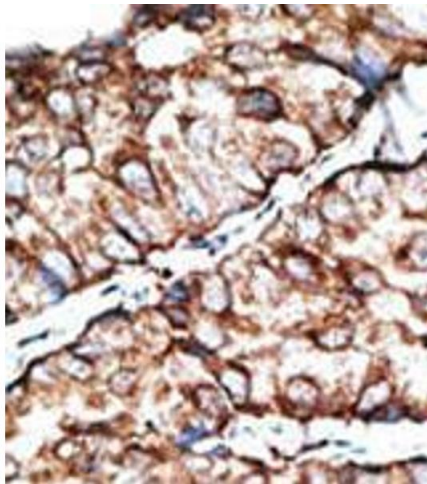
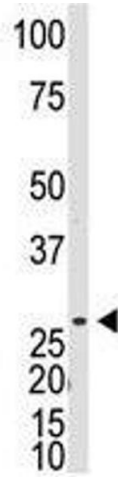


Image 1.

Image 2.