

Datasheet for ABIN357087
anti-GJA3 antibody (N-Term)[Go to Product page](#)

2 Images

Overview

Quantity:	0.4 mL
Target:	GJA3
Binding Specificity:	N-Term
Reactivity:	Human
Host:	Rabbit
Clonality:	Polyclonal
Conjugate:	This GJA3 antibody is un-conjugated
Application:	Immunohistochemistry (Paraffin-embedded Sections) (IHC (p)), Enzyme Immunoassay (EIA)

Product Details

Immunogen:	This antibody is generated from rabbits immunized with a KLH conjugated synthetic peptide selected from the N-term region of human GJA3.
Isotype:	Ig Fraction
Specificity:	This antibody detects GJA3 at N-term.
Purification:	Protein G column, eluted with high and low pH buffers and neutralized immediately, followed by dialysis against PBS

Target Details

Target:	GJA3
Alternative Name:	GJA3 / Cx46 (GJA3 Products)

Target Details

Background: GJA3, an integral membrane protein, belong to the connexin family, alpha-type (group II) subfamily. One gap junction consists of a cluster of closely packed pairs of transmembrane channels, the connexons, through which materials of low MW diffuse from one cell to a neighboring cell. A connexon is composed of a hexamer of connexins. This particular connexin is a component of lens fiber gap junctions, can form both junctional and nonjunctional ('hemi-') channels. Defects in GJA3 are the cause of zonular pulverulent cataract type 3 (CZP3), a form of autosomal dominant congenital cataract. Synonyms: Connexin-46, Gap junction alpha-3 protein

Molecular Weight: 47296 Da

Gene ID: 2700, 9606

UniProt: [Q9Y6H8](#)

Application Details

Application Notes: ELISA 1: 1,000. Immunohistochemistry 1: 50 - 1: 100.
Other applications not tested.
Optimal dilutions are dependent on conditions and should be determined by the user.

Restrictions: For Research Use only

Handling

Format: Liquid

Concentration: 0.25 mg/mL

Buffer: PBS with 0.09 % (W/V) sodium azide

Preservative: Sodium azide

Precaution of Use: This product contains sodium azide: a POISONOUS AND HAZARDOUS SUBSTANCE which should be handled by trained staff only.

Handling Advice: Avoid repeated freezing and thawing.

Storage: 4 °C/-20 °C

Storage Comment: Store the antibody at 2 - 8 °C up to one month or (in aliquots) at -20 °C for longer.

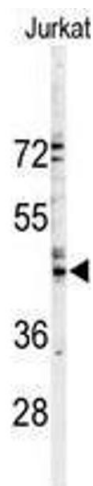


Image 1.

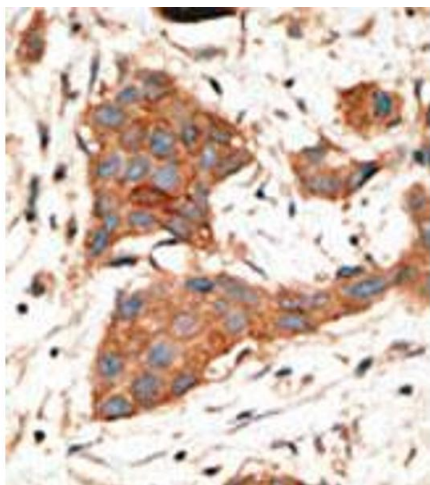


Image 2.