

Datasheet for ABIN357093

**anti-Cx40/GJA5 antibody (N-Term)**[Go to Product page](#)**2** Images

## Overview

Quantity:	200 µL
Target:	Cx40/GJA5 (GJA5)
Binding Specificity:	N-Term
Reactivity:	Human
Host:	Rabbit
Clonality:	Polyclonal
Conjugate:	This Cx40/GJA5 antibody is un-conjugated
Application:	Western Blotting (WB), Enzyme Immunoassay (EIA)

## Product Details

Immunogen:	This antibody is generated from rabbits immunized with a KLH conjugated synthetic peptide selected from the N-terminal region of human GJA5.
Isotype:	Ig Fraction
Specificity:	This antibody detects Connexin 40 (GJA5) at N-term.
Purification:	Protein G column, eluted with high and low pH buffers and neutralized immediately, followed by dialysis against PBS

## Target Details

Target:	Cx40/GJA5 (GJA5)
Alternative Name:	GJA5 / Cx40 ( <a href="#">GJA5 Products</a> )

## Target Details

Background:	Gap junctions were first characterized by electron microscopy as regionally specialized structures on plasma membranes of contacting adherent cells. These structures were shown to consist of cell-to-cell closely packed transmembrane channels. Proteins, called connexins, purified from fractions of enriched gap junctions from different tissues differ. Connexins are designated by their molecular mass. Another system of nomenclature divides gap junction proteins into 2 categories, alpha and beta, according to sequence similarities at the nucleotide and amino acid levels. For example, CX43 is designated alpha-1 gap junction protein, whereas CX32 and CX26 are called beta-1 and beta-2 gap junction proteins, respectively. This nomenclature emphasizes that CX32 and CX26 are more homologous to each other than either of them is to CX43. Connexins have four transmembrane, three intracellular, and two extracellular regions. Different tissues express different connexins, though tissue specificities overlap, and a given tissue or cell can express several different connexins. Developmental regulation of at least some of the connexin genes has been found. Embryo implantation is regulated in part by temporally changing patterns of expression of connexins in the embryo and the maternal decidua.Synonyms: Connexin-40, Gap junction alpha-5 protein
Molecular Weight:	40249 Da
Gene ID:	2702, 9606
UniProt:	<a href="#">P36382</a>
Pathways:	<a href="#">Cell-Cell Junction Organization</a>

## Application Details

Application Notes:	ELISA 1: 1,000. Western blot 1: 100 - 1: 500. Immunohistochemistry 1: 10 - 1: 50. Other applications not tested. Optimal dilutions are dependent on conditions and should be determined by the user.
Restrictions:	For Research Use only

## Handling

Format:	Liquid
Concentration:	0.25 mg/mL
Buffer:	PBS with 0.09 % (W/V) sodium azide
Preservative:	Sodium azide
Precaution of Use:	This product contains sodium azide: a POISONOUS AND HAZARDOUS SUBSTANCE which

Handling

	should be handled by trained staff only.
Handling Advice:	Avoid repeated freezing and thawing.
Storage:	4 °C/-20 °C
Storage Comment:	Store the antibody at 2 - 8 °C up to one month or (in aliquots) at -20 °C for longer.

Images

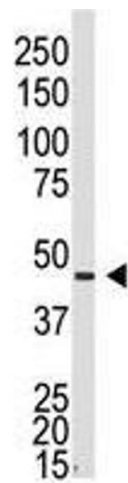


Image 1.

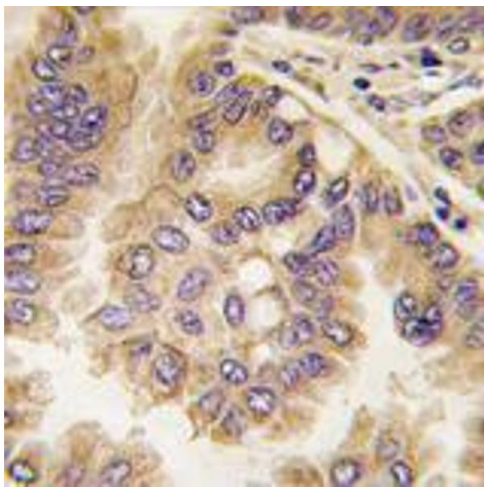


Image 2.