

Datasheet for ABIN357110
anti-HPCAL1 antibody (N-Term)

3 Images

[Go to Product page](#)

Overview

Quantity:	0.4 mL
Target:	HPCAL1
Binding Specificity:	N-Term
Reactivity:	Human, Mouse
Host:	Rabbit
Clonality:	Polyclonal
Conjugate:	This HPCAL1 antibody is un-conjugated
Application:	Western Blotting (WB), Immunohistochemistry (Paraffin-embedded Sections) (IHC (p)), Enzyme Immunoassay (EIA)

Product Details

Immunogen:	This antibody is generated from rabbits immunized with a KLH conjugated synthetic peptide selected from the N-term region of human VILIP3.
Isotype:	Ig Fraction
Specificity:	This antibody VILIP3 at N-term.
Purification:	Protein G column, eluted with high and low pH buffers and neutralized immediately, followed by dialysis against PBS

Target Details

Target:	HPCAL1
Alternative Name:	Hippocalcin-Like Protein 1 (HPCAL1) (HPCAL1 Products)

Target Details

Background: VILIP3 is a member of neuron-specific calcium-binding proteins family found in the retina and brain. It is highly similar to human hippocalcin protein and nearly identical to the rat and mouse hippocalcin like-1 proteins. It may be involved in the calcium-dependent regulation of rhodopsin phosphorylation and may be of relevance for neuronal signalling in the central nervous system. There are two alternatively spliced transcript variants of this gene, with multiple polyadenylation sites. Transcript variant 1 utilizes a different exon and also lacks one exon in the 5' UTR, as compared to variant 2, thus, the encoded protein is the same. Synonyms: BDR1, HLP2, NVL-3, NVP-3, Neural visinin-like protein 3, VILIP-3, Visinin-like protein 3

Molecular Weight: 22182 Da

Gene ID: 3241, 9606

UniProt: [P37235](#)

Application Details

Application Notes: ELISA 1: 1,000. Western blot 1: 100 - 1: 500. Immunohistochemistry 1: 50 - 1: 100.
Other applications not tested.
Optimal dilutions are dependent on conditions and should be determined by the user.

Restrictions: For Research Use only

Handling

Format: Liquid

Concentration: 0.25 mg/mL

Buffer: PBS with 0.09 % (W/V) sodium azide

Preservative: Sodium azide

Precaution of Use: This product contains sodium azide: a POISONOUS AND HAZARDOUS SUBSTANCE which should be handled by trained staff only.

Handling Advice: Avoid repeated freezing and thawing.

Storage: 4 °C/-20 °C

Storage Comment: Store the antibody at 2 - 8 °C up to one month or (in aliquots) at -20 °C for longer.

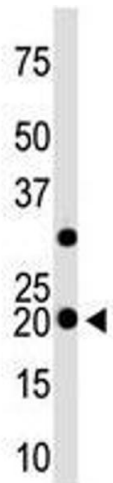


Image 1.

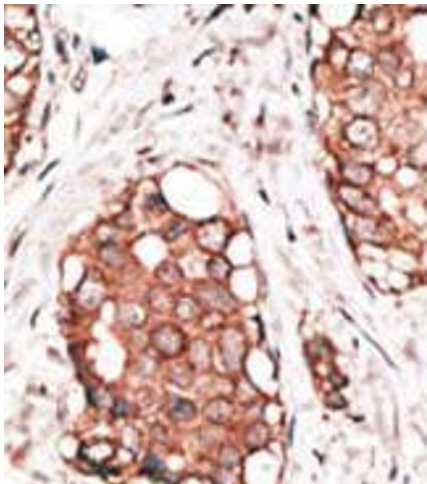


Image 2.

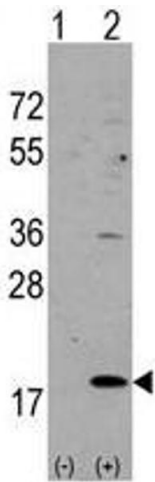


Image 3.