



[Go to Product page](#)

Datasheet for ABIN357112

## anti-Hippocalcin antibody (N-Term)

### 3 Images

#### Overview

Quantity:	0.4 mL
Target:	Hippocalcin (HPCA)
Binding Specificity:	N-Term
Reactivity:	Mouse, Human
Host:	Rabbit
Clonality:	Polyclonal
Conjugate:	This Hippocalcin antibody is un-conjugated
Application:	Western Blotting (WB), Immunohistochemistry (Paraffin-embedded Sections) (IHC (p)), Enzyme Immunoassay (EIA)

#### Product Details

Immunogen:	This antibody is generated from rabbits immunized with a KLH conjugated synthetic peptide selected from the N-terminal region of human Hippocalcin.
Isotype:	Ig Fraction
Specificity:	This antibody detects Hippocalcin at N-term.
Purification:	Protein G column, eluted with high and low pH buffers and neutralized immediately, followed by dialysis against PBS

#### Target Details

Target:	Hippocalcin (HPCA)
Alternative Name:	HPCA / Hippocalcin ( <a href="#">HPCA Products</a> )

## Target Details

---

**Background:** Hippocalcin is a member of neuron-specific calcium-binding proteins family found in the retina and brain. This protein is associated with the plasma membrane. It has similarities to proteins located in the photoreceptor cells that regulate photosignal transduction in a calcium-sensitive manner. This protein displays recoverin activity and a calcium-dependent inhibition of rhodopsin kinase. It is identical to the rat and mouse hippocalcin proteins and thought to play an important role in neurons of the central nervous system in a number of species. **Synonyms:** BDR2, Calcium-binding protein BDR-2, Neuron-specific calcium-binding protein hippocalcin

**Molecular Weight:** 22296 Da

**Gene ID:** 3208

**NCBI Accession:** [NP\\_002134](#)

**UniProt:** [P84074](#)

## Application Details

---

**Application Notes:** ELISA 1: 1,000. Western blot 1: 100 - 1: 500. Immunohistochemistry 1: 50 - 1: 100.  
Other applications not tested.  
Optimal dilutions are dependent on conditions and should be determined by the user.

**Restrictions:** For Research Use only

## Handling

---

**Format:** Liquid

**Concentration:** 0.25 mg/mL

**Buffer:** PBS with 0.09 % (W/V) sodium azide

**Preservative:** Sodium azide

**Precaution of Use:** This product contains sodium azide: a POISONOUS AND HAZARDOUS SUBSTANCE which should be handled by trained staff only.

**Handling Advice:** Avoid repeated freezing and thawing.

**Storage:** 4 °C/-20 °C

**Storage Comment:** Store the antibody at 2 - 8 °C up to one month or (in aliquots) at -20 °C for longer.

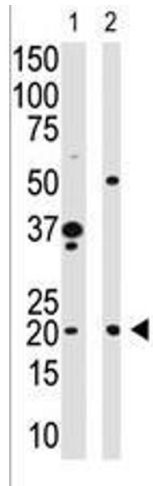


Image 1.

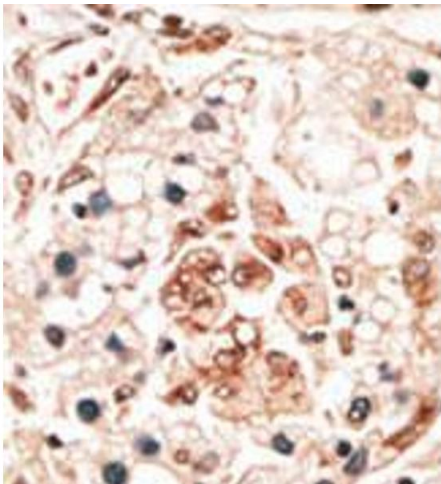


Image 2.

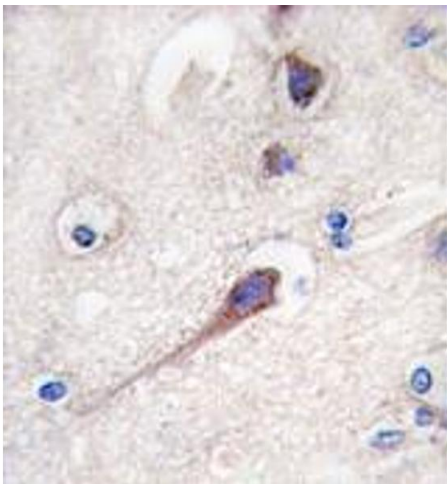


Image 3.