

Datasheet for ABIN357114  
**anti-Recoverin antibody (C-Term)**



[Go to Product page](#)

2 Images

## Overview

Quantity:	0.4 mL
Target:	Recoverin (RCVRN)
Binding Specificity:	C-Term
Reactivity:	Human
Host:	Rabbit
Clonality:	Polyclonal
Conjugate:	This Recoverin antibody is un-conjugated
Application:	Western Blotting (WB), Immunohistochemistry (Paraffin-embedded Sections) (IHC (p)), Enzyme Immunoassay (EIA)

## Product Details

Immunogen:	This antibody is generated from rabbits immunized with a KLH conjugated synthetic peptide selected from the C-terminal region of human Recoverin.
Isotype:	Ig Fraction
Specificity:	This antibody detects Recoverin at C-term.
Purification:	Protein G column, eluted with high and low pH buffers and neutralized immediately, followed by dialysis against PBS

## Target Details

Target:	Recoverin (RCVRN)
Alternative Name:	Recoverin ( <a href="#">RCVRN Products</a> )

## Target Details

Background:	Recoverin belongs to a high-affinity calcium-binding family that includes neuronal calcium sensor-1, visinin-like proteins (VILIPs), guanylate cyclase-activating proteins (GCAPs), and Kv-channel interacting proteins (KchIPs). Features common to this family include four calcium-binding EF-hand domains, and an N-terminal myristoylation sequence. This family of proteins has been implicated in a broad range of cellular signaling functions, including phototransduction and neurotransmitter release, lipid metabolism, gene expression, and ion channel regulation. Myristoylation, the post-translational addition of a fatty acid tail, has been shown to have functional significance for other calcium-binding protein family members. Recoverin is subject to the posttranslational modification of myristoylation. Binding of calcium to recoverin elicits a change in conformation that exposes the buried hydrophobic myristoyl moiety to interaction with cell membranes and other cellular proteins.Synonyms: Cancer-associated retinopathy protein, Protein CAR, RCV1, RCVRN
Molecular Weight:	22999 Da
Gene ID:	5957
NCBI Accession:	<a href="#">NP_002894</a>
UniProt:	<a href="#">P35243</a>
Pathways:	<a href="#">Regulation of G-Protein Coupled Receptor Protein Signaling</a> , <a href="#">Phototransduction</a>

## Application Details

Application Notes:	ELISA 1: 1,000. Western blotting 1: 100 - 1: 500Immunohistochemistry 1: 50 - 1: 100. Other applications not tested. Optimal dilutions are dependent on conditions and should be determined by the user.
Restrictions:	For Research Use only

## Handling

Format:	Liquid
Concentration:	0.25 mg/mL
Buffer:	PBS with 0.09 % (W/V) sodium azide
Preservative:	Sodium azide
Precaution of Use:	This product contains sodium azide: a POISONOUS AND HAZARDOUS SUBSTANCE which should be handled by trained staff only.

Handling

Handling Advice:	Avoid repeated freezing and thawing.
Storage:	4 °C/-20 °C
Storage Comment:	Store the antibody at 2 - 8 °C up to one month or (in aliquots) at -20 °C for longer.

Images

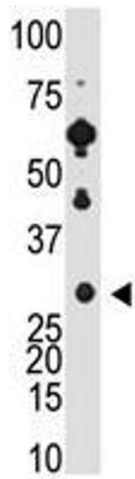


Image 1.

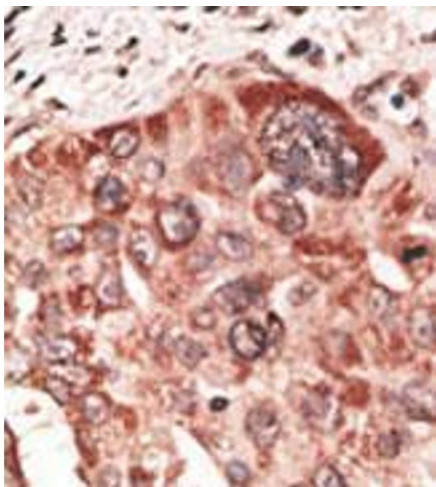


Image 2.