

Datasheet for ABIN357117
anti-GCAP1 antibody (C-Term)[Go to Product page](#)

2 Images

Overview

Quantity:	0.4 mL
Target:	GCAP1 (GUCA1A)
Binding Specificity:	C-Term
Reactivity:	Human
Host:	Rabbit
Clonality:	Polyclonal
Conjugate:	This GCAP1 antibody is un-conjugated
Application:	Western Blotting (WB), Immunohistochemistry (Paraffin-embedded Sections) (IHC (p)), Enzyme Immunoassay (EIA)

Product Details

Immunogen:	This antibody is generated from rabbits immunized with a KLH conjugated synthetic peptide selected from the C-terminal region of human GCAP1.
Isotype:	Ig Fraction
Specificity:	This antibody detects GCAP1 at C-term.
Purification:	Protein G column, eluted with high and low pH buffers and neutralized immediately, followed by dialysis against PBS

Target Details

Target:	GCAP1 (GUCA1A)
Alternative Name:	GCAP1 / GUCA1A (GUCA1A Products)

Target Details

Background:	Guanylate cyclase-activating protein is a Ca^{2+} -binding protein that upregulates synthesis of cGMP in photoreceptors. The known mammalian GCAPs are more than 90 % similar, consisting of 201 to 205 amino acids, and containing 3 identically conserved Ca^{2+} -binding sites. The GUCA1A gene, also termed GCAP1, is transcribed into a single 1.7-kb mRNA species detectable only in the retina. In a 4-generation British family with typical clinical features of autosomal dominant cone dystrophy a tyr99-to-cys mutation) in the GUCA1A gene has been identified. Another family with a pro50-to-leu mutation in GUCA1A demonstrated phenotypic variability ranging from mild photophobia to rod-cone dystrophy. The mutant protein could activate guanylate cyclase 1 (GUCY2D) and displayed similar calcium sensitivity to wildtype protein. However, there was a marked increase in the susceptibility to protease degradation and a reduction in the thermal stability of the pro50-to-leu mutation, which may depress cellular concentration and thereby contribute to retinal cell mortality. Synonyms: C6orf131, GUCA1, Guanylate cyclase activator 1A, Guanylyl cyclase-activating protein 1
Molecular Weight:	22774 Da
Gene ID:	2978, 9606
UniProt:	P43080
Pathways:	Regulation of G-Protein Coupled Receptor Protein Signaling , Phototransduction

Application Details

Application Notes:	ELISA 1: 1,000. Western blot 1: 100 - 1: 500. Immunohistochemistry 1: 50 - 1: 100. Other applications not tested. Optimal dilutions are dependent on conditions and should be determined by the user.
Restrictions:	For Research Use only

Handling

Format:	Liquid
Concentration:	0.25 mg/mL
Buffer:	PBS with 0.09 % (W/V) sodium azide
Preservative:	Sodium azide
Precaution of Use:	This product contains sodium azide: a POISONOUS AND HAZARDOUS SUBSTANCE which should be handled by trained staff only.

Handling

Handling Advice:	Avoid repeated freezing and thawing.
Storage:	4 °C/-20 °C
Storage Comment:	Store the antibody at 2 - 8 °C up to one month or (in aliquots) at -20 °C for longer.

Images

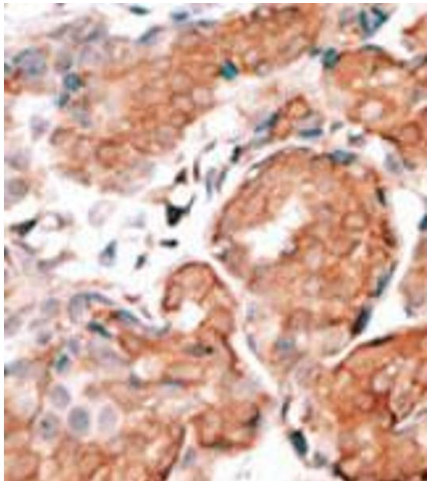


Image 1.

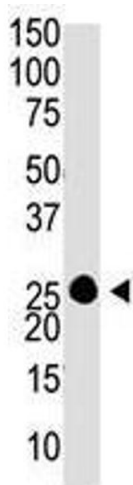


Image 2.