

Datasheet for ABIN357122

## anti-Calmodulin 1 antibody (C-Term)

3 Images



[Go to Product page](#)

### Overview

Quantity:	0.4 mL
Target:	Calmodulin 1 (Calm1)
Binding Specificity:	C-Term
Reactivity:	Human, Rat, Mouse, Zebrafish (Danio rerio)
Host:	Rabbit
Clonality:	Polyclonal
Conjugate:	This Calmodulin 1 antibody is un-conjugated
Application:	Western Blotting (WB), Immunohistochemistry (Paraffin-embedded Sections) (IHC (p)), Enzyme Immunoassay (EIA)

### Product Details

Immunogen:	This antibody is generated from rabbits immunized with a KLH conjugated synthetic peptide selected from the C-terminal region of human calmodulin.
Isotype:	Ig Fraction
Specificity:	This antibody detects Calmodulin at C-term.
Cross-Reactivity (Details):	Species reactivity (expected): Mouse, Rat, Rabbit, Chicken, Bovine, Xenopus and Zebrafish. Species reactivity (tested): Human
Purification:	Protein G Chromatography eluted with high and low pH buffers and neutralized immediately, followed by dialysis against PBS.

## Target Details

Target:	Calmodulin 1 (Calm1)
Alternative Name:	Calmodulin ( <a href="#">Calm1 Products</a> )
Background:	Calmodulin is the archetype of the family of calcium-modulated proteins of which nearly 20 members have been found. They are identified by their occurrence in the cytosol or on membranes facing the cytosol and by a high affinity for calcium. Calmodulin contains 149 amino acids and has 4 calcium-binding domains. Its functions include roles in growth and the cell cycle as well as in signal transduction and the synthesis and release of neurotransmitters. Synonyms: CALM, CALM1, CAM, CAM1
Molecular Weight:	16706 Da
Gene ID:	808, 9606
UniProt:	<a href="#">P62158</a>
Pathways:	<a href="#">cAMP Metabolic Process</a> , <a href="#">Myometrial Relaxation and Contraction</a> , <a href="#">G-protein mediated Events</a> , <a href="#">Interaction of EGFR with phospholipase C-gamma</a> , <a href="#">Phototransduction</a> , <a href="#">BCR Signaling</a>

## Application Details

Application Notes:	ELISA: 1/1,000. Western blot 1/100-1/500. Immunohistochemistry: 1/10-1/50. Other applications not tested. Optimal dilutions are dependent on conditions and should be determined by the user.
Restrictions:	For Research Use only

## Handling

Format:	Liquid
Concentration:	0.25 mg/mL
Buffer:	PBS with 0.09 % (W/V) Sodium Azide as preservative.
Preservative:	Sodium azide
Precaution of Use:	This product contains sodium azide: a POISONOUS AND HAZARDOUS SUBSTANCE which should be handled by trained staff only.
Handling Advice:	Avoid repeated freezing and thawing.
Storage:	4 °C/-20 °C
Storage Comment:	Store the antibody undiluted at 2-8 °C for one month (in aliquots) at -20 °C for longer.

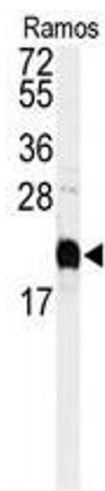


Image 1.

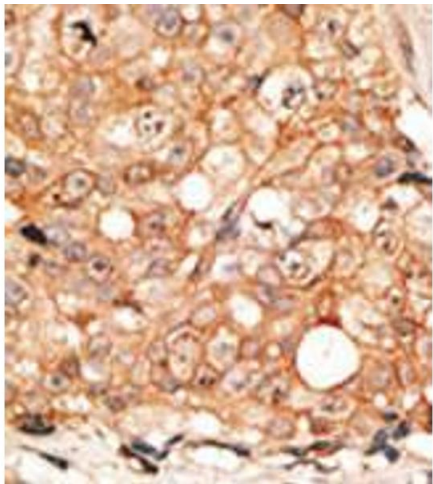


Image 2.

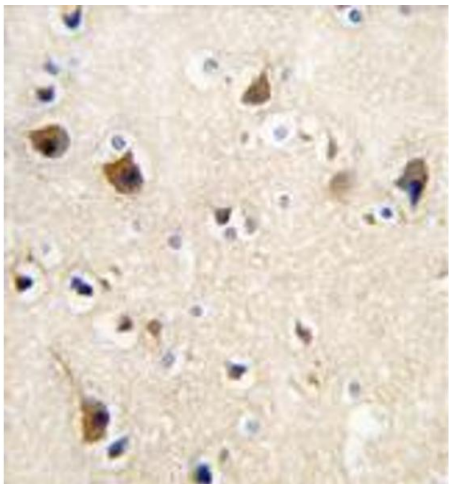


Image 3.