

Datasheet for ABIN357143
anti-SIGLEC5 antibody (N-Term)

3 Images

[Go to Product page](#)

Overview

Quantity:	0.4 mL
Target:	SIGLEC5
Binding Specificity:	N-Term
Reactivity:	Human, Mouse
Host:	Rabbit
Clonality:	Polyclonal
Conjugate:	This SIGLEC5 antibody is un-conjugated
Application:	Western Blotting (WB), Immunohistochemistry (Paraffin-embedded Sections) (IHC (p)), Enzyme Immunoassay (EIA)

Product Details

Immunogen:	This antibody is generated from rabbits immunized with a KLH conjugated synthetic peptide selected from the N-terminal region of human SIGLEC5.
Isotype:	Ig Fraction
Specificity:	This antibody detects SIGLEC5 at N-term.
Purification:	Protein G column, eluted with high and low pH buffers and neutralized immediately, followed by dialysis against PBS

Target Details

Target:	SIGLEC5
Alternative Name:	CD170 / SIGLEC5 (SIGLEC5 Products)

Target Details

Background: SIGLEC5 is a putative adhesion molecule that mediates sialic-acid dependent binding to cells. This protein binds equally to alpha2,3-linked and alpha2,6-linked sialic acid. The sialic acid recognition site may be masked by cis interactions with sialic acids on the same cell surface. This molecule is expressed by monocytic/myeloid lineage cells. SIGLEC5 is found at high levels in peripheral blood leukocytes, spleen, bone marrow and at lower levels in lymph node, lung, appendix, placenta, pancreas and thymus. It is expressed by monocytes and neutrophils but absent from leukemic cell lines representing early stages of myelomonocytic differentiation. Synonyms: CD33 antigen-like 2, CD33L2, OB-binding protein 2, OBBP2, Obesity-binding protein 2, Sialic acid-binding Ig-like lectin 5, Siglec-5

Molecular Weight: 60715 Da

Gene ID: 8778, 5874

UniProt: [O15389](#)

Application Details

Application Notes: ELISA 1: 1,000. Western blot 1: 100 - 1: 500. Immunohistochemistry 1: 50 - 1: 100. Other applications not tested. Optimal dilutions are dependent on conditions and should be determined by the user.

Restrictions: For Research Use only

Handling

Format: Liquid

Concentration: 0.25 mg/mL

Buffer: PBS with 0.09 % (W/V) sodium azide

Preservative: Sodium azide

Precaution of Use: This product contains sodium azide: a POISONOUS AND HAZARDOUS SUBSTANCE which should be handled by trained staff only.

Handling Advice: Avoid repeated freezing and thawing.

Storage: 4 °C/-20 °C

Storage Comment: Store the antibody at 2 - 8 °C up to one month or (in aliquots) at -20 °C for longer.

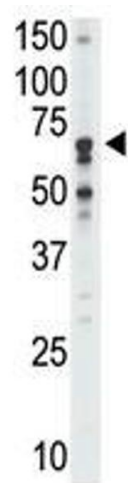


Image 1.

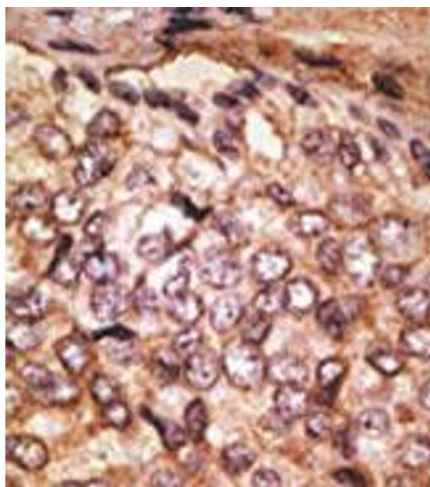


Image 2.

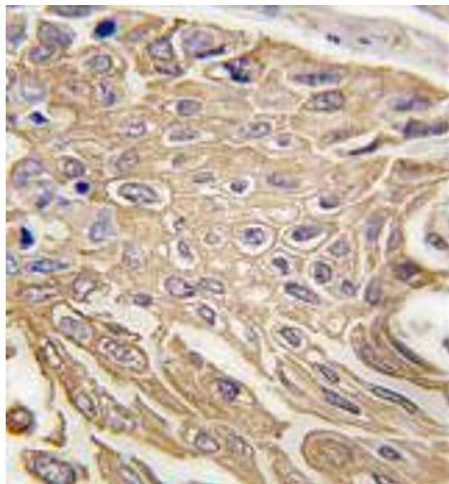


Image 3.