



[Go to Product page](#)

Datasheet for ABIN357146

## anti-SIGLEC6 antibody (C-Term)

### 2 Images

#### Overview

Quantity:	0.4 mL
Target:	SIGLEC6
Binding Specificity:	C-Term
Reactivity:	Human, Mouse
Host:	Rabbit
Clonality:	Polyclonal
Conjugate:	This SIGLEC6 antibody is un-conjugated
Application:	Western Blotting (WB), Immunohistochemistry (Paraffin-embedded Sections) (IHC (p)), Enzyme Immunoassay (EIA)

#### Product Details

Immunogen:	This antibody is generated from rabbits immunized with a KLH conjugated synthetic peptide selected from the C-terminal region of human SIGLEC6.
Isotype:	Ig Fraction
Specificity:	This antibody detects SIGLEC6 at C-term.
Purification:	Protein G column, eluted with high and low pH buffers and neutralized immediately, followed by dialysis against PBS

#### Target Details

Target:	SIGLEC6
Alternative Name:	CD327 / SIGLEC6 ( <a href="#">SIGLEC6 Products</a> )

## Target Details

---

**Background:** SIGLEC6 is a putative adhesion molecule that mediates sialic-acid dependent binding to cells by binding to alpha2,6-linked sialic acid. The sialic acid recognition site may be masked by cis interactions with sialic acids on the same cell surface. SIGLEC6, which interacts with LEP, is expressed at high levels in placenta (cyto-and syncytiotrophoblastic cells) and at lower levels in spleen, peripheral blood leukocytes (predominantly B-cells) and small intestine. It contains 1 copy of a cytoplasmic motif that is referred to as the immunoreceptor tyrosine-based inhibitor motif (ITIM). This motif is involved in downmodulation of cellular responses. The phosphorylated ITIM motif binds to the SH2 domain of PTPN6/SHP-1. The gene for SIGLEC6 belongs to the immunoglobulin superfamily. Synonyms: CD33 antigen-like 1, CD33L, CD33L1, CDw327, OB-BP1, OBBP1, Obesity-binding protein 1, Sialic acid-binding Ig-like lectin 6, Siglec-6

---

**Molecular Weight:** 48822 Da

---

**Gene ID:** 946, 5874

---

**UniProt:** [O43699](#)

## Application Details

---

**Application Notes:** ELISA 1: 1,000. Western blot 1: 100 - 1: 500. Immunohistochemistry 1: 50 - 1: 100.  
Other applications not tested.  
Optimal dilutions are dependent on conditions and should be determined by the user.

---

**Restrictions:** For Research Use only

## Handling

---

**Format:** Liquid

---

**Concentration:** 0.25 mg/mL

---

**Buffer:** PBS with 0.09 % (W/V) sodium azide

---

**Preservative:** Sodium azide

---

**Precaution of Use:** This product contains sodium azide: a POISONOUS AND HAZARDOUS SUBSTANCE which should be handled by trained staff only.

---

**Handling Advice:** Avoid repeated freezing and thawing.

---

**Storage:** 4 °C/-20 °C

---

**Storage Comment:** Store the antibody at 2 - 8 °C up to one month or (in aliquots) at -20 °C for longer.

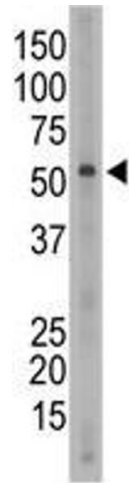


Image 1.

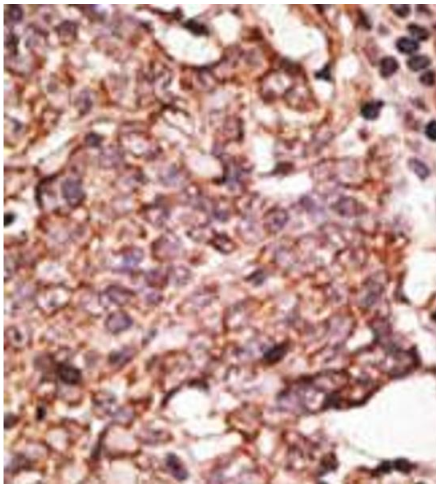


Image 2.