



[Go to Product page](#)

Datasheet for ABIN357149

## anti-SIGLEC8 antibody (C-Term)

### 2 Images

#### Overview

Quantity:	0.4 mL
Target:	SIGLEC8
Binding Specificity:	C-Term
Reactivity:	Human, Mouse
Host:	Rabbit
Clonality:	Polyclonal
Conjugate:	This SIGLEC8 antibody is un-conjugated
Application:	Western Blotting (WB), Immunohistochemistry (Paraffin-embedded Sections) (IHC (p)), Enzyme Immunoassay (EIA)

#### Product Details

Immunogen:	This antibody is generated from rabbits immunized with a KLH conjugated synthetic peptide selected from the C-terminal region of human SIGLEC8.
Isotype:	Ig Fraction
Specificity:	This antibody detects SIGLEC8 at C-term.
Purification:	Protein G column, eluted with high and low pH buffers and neutralized immediately, followed by dialysis against PBS

#### Target Details

Target:	SIGLEC8
Alternative Name:	CD329 / SIGLEC8 ( <a href="#">SIGLEC8 Products</a> )

## Target Details

---

**Background:** SIGLEC8 is a putative adhesion molecule that mediates sialic-acid dependent binding to cells. It preferentially binds to alpha2,3-linked sialic acid. and also binds to alpha2,6-linked sialic acid. The sialic acid recognition site may be masked by cis interactions with sialic acids on the same cell surface. SIGLEC8 is expressed specifically on eosinophils. The protein contains 1 copy of a cytoplasmic motif that is referred to as the immunoreceptor tyrosine-based inhibitor motif (ITIM). This motif is involved in downmodulation of cellular responses. The phosphorylated ITIM motif binds to the SH2 domain of PTPN6/SHP-1. The SIGLEC8 gene belongs to the immunoglobulin superfamily. Synonyms: CDw329, SAF2, Sialic acid-binding Ig-like lectin 8, Sialoadhesin family member 2, Siglec-8

**Molecular Weight:** 54042 Da

**Gene ID:** 27181, 9606

**UniProt:** [Q9NYZ4](#)

## Application Details

---

**Application Notes:** ELISA 1: 1,000. Western blot 1: 100 - 1: 500. Immunohistochemistry 1: 50 - 1: 100.  
Other applications not tested.  
Optimal dilutions are dependent on conditions and should be determined by the user.

**Restrictions:** For Research Use only

## Handling

---

**Format:** Liquid

**Concentration:** 0.25 mg/mL

**Buffer:** PBS with 0.09 % (W/V) sodium azide

**Preservative:** Sodium azide

**Precaution of Use:** This product contains sodium azide: a POISONOUS AND HAZARDOUS SUBSTANCE which should be handled by trained staff only.

**Handling Advice:** Avoid repeated freezing and thawing.

**Storage:** 4 °C/-20 °C

**Storage Comment:** Store the antibody at 2 - 8 °C up to one month or (in aliquots) at -20 °C for longer.

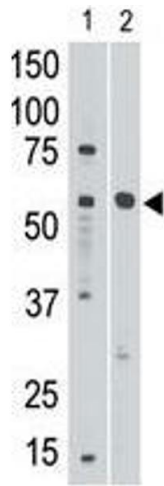


Image 1.

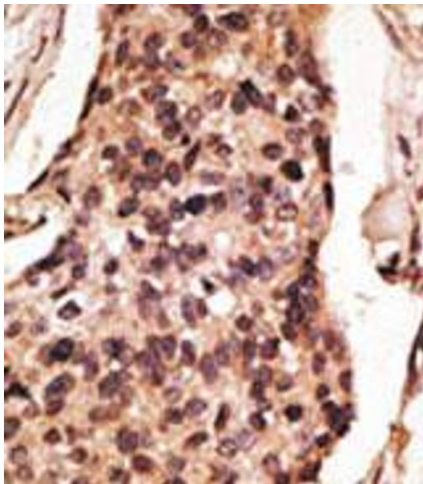


Image 2.