

Datasheet for ABIN357164  
**anti-GRM8 antibody (C-Term)**



[Go to Product page](#)

1 Image

## Overview

Quantity:	0.4 mL
Target:	GRM8
Binding Specificity:	C-Term
Reactivity:	Human, Mouse
Host:	Rabbit
Clonality:	Polyclonal
Conjugate:	This GRM8 antibody is un-conjugated
Application:	Western Blotting (WB), Enzyme Immunoassay (EIA)

## Product Details

Immunogen:	This antibody is generated from rabbits immunized with a KLH conjugated synthetic peptide selected from the C-terminal region of human GRPRC1H.
Isotype:	Ig Fraction
Specificity:	This antibody detects Metabotropic Glutamate Receptor 8 (GRPRC1H) at C-term.
Purification:	Protein G column, eluted with high and low pH buffers and neutralized immediately, followed by dialysis against PBS

## Target Details

Target:	GRM8
Alternative Name:	mGluR8 / GRM8 ( <a href="#">GRM8 Products</a> )

## Target Details

Background:	L-glutamate is the major excitatory neurotransmitter in the central nervous system and activates both ionotropic and metabotropic glutamate receptors. Glutamatergic neurotransmission is involved in most aspects of normal brain function and can be perturbed in many neuropathologic conditions. The metabotropic glutamate receptors are a family of G protein-coupled receptors,that have been divided into 3 groups on the basis of sequence homology, putative signal transduction mechanisms, and pharmacologic properties. Group I includes GRM1 and GRM5 and these receptors have been shown to activate phospholipase C. Group II includes GRM2 and GRM3 while Group III includes GRM4, GRM6, GRM7and GRM8. Group II and III receptors are linked to the inhibition of the cyclic AMP cascade but differ in their agonist selectivities.Synonyms: GPRC1H, Metabotropic glutamate receptor 8
Molecular Weight:	101740 Da
Gene ID:	2918, 9606
UniProt:	<a href="#">O00222</a>
Pathways:	<a href="#">cAMP Metabolic Process</a> , <a href="#">Synaptic Membrane</a>

## Application Details

Application Notes:	ELISA 1: 1,000Western blot 1: 100 - 1: 500. Other applications not tested. Optimal dilutions are dependent on conditions and should be determined by the user.
Restrictions:	For Research Use only

## Handling

Format:	Liquid
Concentration:	0.25 mg/mL
Buffer:	PBS with 0.09 % (W/V) sodium azide
Preservative:	Sodium azide
Precaution of Use:	This product contains sodium azide: a POISONOUS AND HAZARDOUS SUBSTANCE which should be handled by trained staff only.
Handling Advice:	Avoid repeated freezing and thawing.
Storage:	4 °C/-20 °C
Storage Comment:	Store the antibody at 2 - 8 °C up to one month or (in aliquots) at -20 °C for longer.

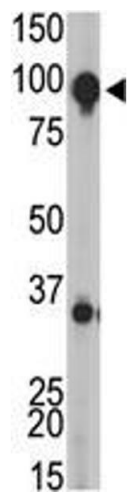


Image 1.