



[Go to Product page](#)

Datasheet for ABIN357181  
**anti-BMP3 antibody (N-Term)**

2 Images

### Overview

Quantity:	0.4 mL
Target:	BMP3
Binding Specificity:	N-Term
Reactivity:	Human
Host:	Rabbit
Clonality:	Polyclonal
Conjugate:	This BMP3 antibody is un-conjugated
Application:	Western Blotting (WB), Immunohistochemistry (Paraffin-embedded Sections) (IHC (p)), Enzyme Immunoassay (EIA)

### Product Details

Immunogen:	This antibody is generated from rabbits immunized with a KLH conjugated synthetic peptide selected from the N-terminal region of human Bmp3.
Isotype:	Ig Fraction
Specificity:	This antibody reacts to BMP3.
Purification:	Protein G column, eluted with high and low pH buffers and neutralized immediately, followed by dialysis against PBS

### Target Details

Target:	BMP3
Alternative Name:	BMP3 ( <a href="#">BMP3 Products</a> )

## Target Details

---

**Background:** The BMPs belong to the TGF-Beta superfamily. BMPs stimulate the production of bone matrix proteins and thereby alter stromal cell and osteoclast proliferation, a key step in bone marrow development. In addition to promoting ectopic bone and cartilage development, BMPs regulate the growth, differentiation, chemotaxis, proliferation, and apoptosis of various cell types, including mesenchymal cells, epithelial cells, hematopoietic cells, and neuronal cells. BMPs also play a role in dorsal/ventral patterning. BMP3, highly expressed in lung, ovary and small intestine, participates in cartilage and bone formation. BMP3 and BMP2 genes map to conserved regions between human and mouse. Synonyms: BMP-3A, BMP3A, Bone morphogenetic protein 3, Osteogenin

**Gene ID:** 651, 9606

**UniProt:** [P12645](#)

## Application Details

---

**Application Notes:** ELISA: 1/1,000. Immunohistochemistry: 1/50 - 1/100. Western blotting: 1: 500  
Other applications not tested.  
Optimal dilutions are dependent on conditions and should be determined by the user.

**Restrictions:** For Research Use only

## Handling

---

**Format:** Liquid

**Concentration:** 0.25 mg/mL

**Buffer:** PBS with 0.09 % (W/V) sodium azide

**Preservative:** Sodium azide

**Precaution of Use:** This product contains sodium azide: a POISONOUS AND HAZARDOUS SUBSTANCE which should be handled by trained staff only.

**Handling Advice:** Avoid repeated freezing and thawing.

**Storage:** 4 °C/-20 °C

**Storage Comment:** Store the antibody undiluted at 2-8 °C for one month or (in aliquots) at -20 °C for longer.

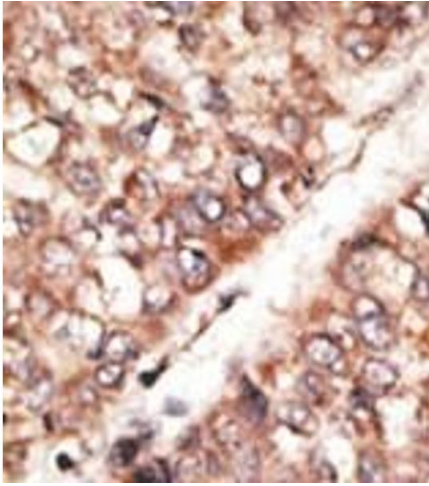


Image 1.

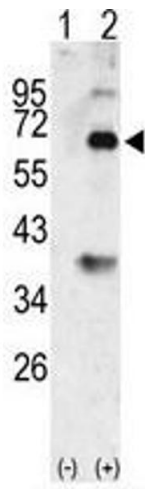


Image 2.