

[Go to Product page](#)

## Datasheet for ABIN357184 anti-BMP6 antibody (N-Term)

### 2 Images

#### Overview

Quantity:	0.4 mL
Target:	BMP6
Binding Specificity:	N-Term
Reactivity:	Human
Host:	Rabbit
Clonality:	Polyclonal
Conjugate:	This BMP6 antibody is un-conjugated
Application:	Western Blotting (WB), Enzyme Immunoassay (EIA)

#### Product Details

Immunogen:	KLH conjugated synthetic peptide selected from the N-terminal region of human Bmp6
Isotype:	Ig Fraction
Specificity:	This antibody detects Bmp6 at N-term.
Purification:	Protein G column, eluted with high and low pH buffers and neutralized immediately, followed by dialysis against PBS

#### Target Details

Target:	BMP6
Alternative Name:	BMP6 ( <a href="#">BMP6 Products</a> )
Background:	The bone morphogenetic proteins (BMPs) are a family of secreted signaling molecules that can

## Target Details

---

induce ectopic bone growth. Many BMPs are part of the transforming growth factor-beta (TGFB) superfamily. BMPs were originally identified by an ability of demineralized bone extract to induce endochondral osteogenesis in vivo in an extraskeletal site. Based on its expression early in embryogenesis, Bmp6 has a proposed role in early development. In addition, the fact that BMP6 is closely related to BMP5 and BMP7 has lead to speculation of possible bone inductive activity. Synonyms: BMP-6, Bone morphogenetic protein 6, VGR, VGR1

Molecular Weight: 57225 Da

Gene ID: 654, 5874

UniProt: [P22004](#)

Pathways: [Regulation of Hormone Metabolic Process](#), [Regulation of Hormone Biosynthetic Process](#)

## Application Details

---

Application Notes: ELISA1: 1,000. Western blot 1: 100 - 1: 500. Immunohistochemistry 1: 10 - 1: 50.  
Other applications not tested.  
Optimal dilutions are dependent on conditions and should be determined by the user.

Restrictions: For Research Use only

## Handling

---

Format: Liquid

Concentration: 0.25 mg/mL

Buffer: PBS with 0.09 % (W/V) sodium azide

Preservative: Sodium azide

Precaution of Use: This product contains sodium azide: a POISONOUS AND HAZARDOUS SUBSTANCE which should be handled by trained staff only.

Handling Advice: Avoid repeated freezing and thawing.

Storage: 4 °C/-20 °C

Storage Comment: Store the antibody at 2 - 8 °C up to one month or (in aliquots) at -20 °C for longer.

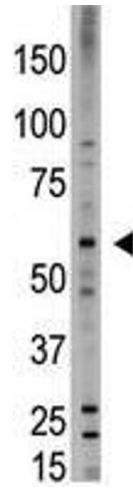


Image 1.

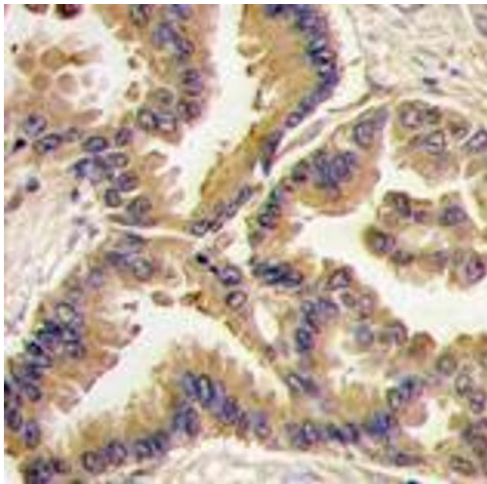


Image 2.