

Datasheet for ABIN357185  
**anti-BMP7 antibody (N-Term)**



[Go to Product page](#)

3 Images

## Overview

Quantity:	0.4 mL
Target:	BMP7
Binding Specificity:	N-Term
Reactivity:	Human
Host:	Rabbit
Clonality:	Polyclonal
Conjugate:	This BMP7 antibody is un-conjugated
Application:	Western Blotting (WB), Immunohistochemistry (Paraffin-embedded Sections) (IHC (p)), Immunofluorescence (IF), Enzyme Immunoassay (EIA)

## Product Details

Immunogen:	This BMP7 antibody is generated from rabbits immunized with a KLH conjugated synthetic peptide selected from the N-terminal region of human Bmp7.
Isotype:	Ig Fraction
Specificity:	This antibody detects Bmp7 at N-term.
Purification:	Protein G column, eluted with high and low pH buffers and neutralized immediately, followed by dialysis against PBS

## Target Details

Target:	BMP7
Alternative Name:	BMP7 ( <a href="#">BMP7 Products</a> )

## Target Details

Background:	Bone Morphogenetic Protein 7 (BMP7), also known as osteogenic protein 1 (OP1), is produced from a DNA sequence encoding the human BMP2 signal peptide and human BMP2 propeptide (amino acid residues 1 to 282) fused to the human BMP7 mature subunit (amino acid residues 293 to 431). Mature human BMP7, generated after the proteolytic removal of the signal peptide and the propeptide, is a disulfide linked homodimeric protein, comprised of two 139 amino acid residue subunits. Bone Morphogenetic Proteins (BMP) are members of the TGF beta superfamily of cytokines that affect bone and cartilage formation. Similar to other TGF beta family proteins, BMPs are highly conserved across animal species.Synonyms: BMP-7, Bone morphogenetic protein 7, OP1, Osteogenic protein 1
Molecular Weight:	49313 Da
Gene ID:	655, 9606
UniProt:	<a href="#">P18075</a>
Pathways:	<a href="#">Steroid Hormone Mediated Signaling Pathway</a> , <a href="#">Stem Cell Maintenance</a>

## Application Details

Application Notes:	ELISA: 1/1,000. Western blot: 1/50-1/200. Immunohistochemistry: 1/50-1/100. Immunofluorescence: 1/50-1/100. Other applications not tested. Optimal dilutions are dependent on conditions and should be determined by the user.
Restrictions:	For Research Use only

## Handling

Format:	Liquid
Concentration:	0.25 mg/mL
Buffer:	PBS with 0.09 % (W/V) Sodium Azide as preservative.
Preservative:	Sodium azide
Precaution of Use:	This product contains sodium azide: a POISONOUS AND HAZARDOUS SUBSTANCE which should be handled by trained staff only.
Handling Advice:	Avoid repeated freezing and thawing.
Storage:	4 °C/-20 °C
Storage Comment:	Store the antibody at 2 - 8 °C up to one month or (in aliquots) at -20 °C for longer.

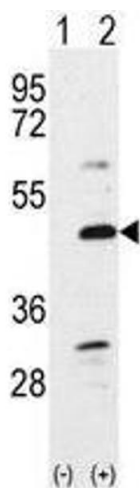


Image 1.

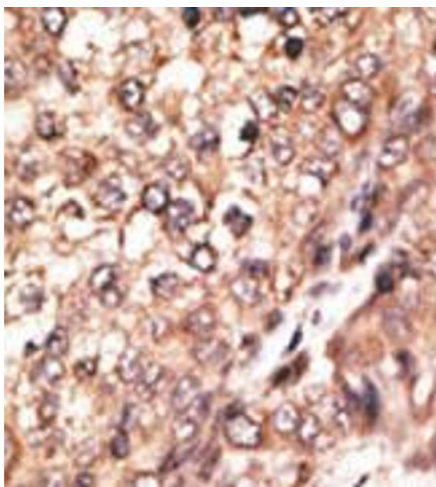


Image 2.

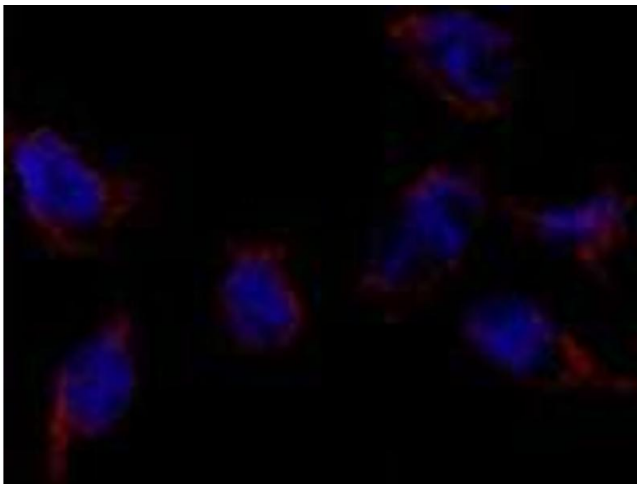


Image 3.