

Datasheet for ABIN357284  
**anti-NMD3 antibody (C-Term)**[Go to Product page](#)

## 1 Image

## Overview

Quantity:	0.4 mL
Target:	NMD3
Binding Specificity:	C-Term
Reactivity:	Human, Mouse
Host:	Rabbit
Clonality:	Polyclonal
Conjugate:	This NMD3 antibody is un-conjugated
Application:	Western Blotting (WB), Enzyme Immunoassay (EIA)

## Product Details

Immunogen:	This antibody is generated from rabbits immunized with a KLH conjugated synthetic peptide selected from the C-terminal region of human NMD3.
Isotype:	Ig Fraction
Specificity:	This antibody detects NMD3 at C-term.
Purification:	Protein G column, eluted with high and low pH buffers and neutralized immediately, followed by dialysis against PBS

## Target Details

Target:	NMD3
Alternative Name:	NMD3 ( <a href="#">NMD3 Products</a> )

## Target Details

**Background:** It has been suggested that NMD3 is a cytoplasmic factor required for a late cytoplasmic assembly step of the 60S subunit but is not a ribosomal protein. A mutation in NMD3 was found to be lethal in the absence of XRN1, which encodes the major cytoplasmic exoribonuclease responsible for mRNA turnover. The NMD3 protein sequence does not contain readily recognizable motifs of known function. However, NMD3 orthologues display an amino-terminal domain containing four repeats of Cx2C, reminiscent of zinc-binding proteins, implicated in nucleic acid binding or protein oligomerization. Synonyms: 60S ribosomal export protein NMD3, CGI-07, hNMD3

**Molecular Weight:** 57603 Da

**Gene ID:** 51068, 9606

**UniProt:** [Q96D46](#)

## Application Details

**Application Notes:** ELISA 1: 1,000. Western blot 1: 100 - 1: 500.  
Other applications not tested.  
Optimal dilutions are dependent on conditions and should be determined by the user.

**Restrictions:** For Research Use only

## Handling

**Format:** Liquid

**Concentration:** 0.25 mg/mL

**Buffer:** PBS with 0.09 % (W/V) sodium azide

**Preservative:** Sodium azide

**Precaution of Use:** This product contains sodium azide: a POISONOUS AND HAZARDOUS SUBSTANCE which should be handled by trained staff only.

**Handling Advice:** Avoid repeated freezing and thawing.

**Storage:** 4 °C/-20 °C

**Storage Comment:** Store the antibody at 2 - 8 °C up to one month or (in aliquots) at -20 °C for longer.

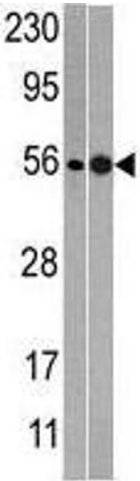


Image 1.