

Datasheet for ABIN357285  
**anti-RCL1 antibody (N-Term)**



[Go to Product page](#)

1 Image

## Overview

Quantity:	0.4 mL
Target:	RCL1
Binding Specificity:	N-Term
Reactivity:	Human
Host:	Rabbit
Clonality:	Polyclonal
Conjugate:	This RCL1 antibody is un-conjugated
Application:	Western Blotting (WB), Enzyme Immunoassay (EIA)

## Product Details

Immunogen:	This antibody is generated from rabbits immunized with a KLH conjugated synthetic peptide selected from the N-terminal region of human RCL1.
Isotype:	Ig Fraction
Specificity:	This antibody detects RCL1 at N-term.
Purification:	Protein G column, eluted with high and low pH buffers and neutralized immediately, followed by dialysis against PBS

## Target Details

Target:	RCL1
Alternative Name:	RCL1 ( <a href="#">RCL1 Products</a> )

## Target Details

Background:	RCL1, which does not have cyclase activity, plays a role in 40S- ribosomal-subunit biogenesis in the early pre-rRNA processing steps at sites A0, A1 and A2 that are required for proper maturation of the 18S RNA.Synonyms: HSPC338, RNA 3'-terminal phosphate cyclase-like protein, RNAC, RPC2, RPCL1, RTC2
Molecular Weight:	40843 Da
Gene ID:	10171, 9606
UniProt:	<a href="#">Q9Y2P8</a>

## Application Details

Application Notes:	ELISA 1: 1,000. Western blot 1: 100 - 1: 500. Other applications not tested. Optimal dilutions are dependent on conditions and should be determined by the user.
Restrictions:	For Research Use only

## Handling

Format:	Liquid
Concentration:	0.25 mg/mL
Buffer:	PBS with 0.09 % (W/V) sodium azide
Preservative:	Sodium azide
Precaution of Use:	This product contains sodium azide: a POISONOUS AND HAZARDOUS SUBSTANCE which should be handled by trained staff only.
Handling Advice:	Avoid repeated freezing and thawing.
Storage:	4 °C/-20 °C
Storage Comment:	Store the antibody at 2 - 8 °C up to one month or (in aliquots) at -20 °C for longer.

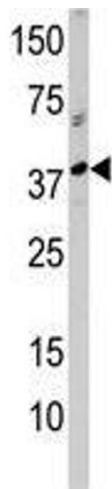


Image 1.