

Datasheet for ABIN357333

anti-NCAPH2 antibody (N-Term)[Go to Product page](#)**1** Image

Overview

| | |
|----------------------|---|
| Quantity: | 0.4 mL |
| Target: | NCAPH2 |
| Binding Specificity: | N-Term |
| Reactivity: | Human |
| Host: | Rabbit |
| Clonality: | Polyclonal |
| Conjugate: | This NCAPH2 antibody is un-conjugated |
| Application: | Western Blotting (WB), Enzyme Immunoassay (EIA) |

Product Details

| | |
|---------------|--|
| Immunogen: | This antibody is generated from rabbits immunized with a KLH conjugated synthetic peptide selected from the N-terminal region of human NCAPH2. |
| Isotype: | Ig Fraction |
| Purification: | Protein G column, eluted with high and low pH buffers and neutralized immediately, followed by dialysis against PBS |

Target Details

| | |
|-------------------|--|
| Target: | NCAPH2 |
| Alternative Name: | NCAPH2 (NCAPH2 Products) |
| Background: | Structural maintenance of chromosomes (SMC) and non-SMC condensin proteins associate into complexes that have been implicated in the process of chromosome condensation. A |

Target Details

crucial prerequisite for accurate segregation of replicated sister chromatids is the condensation of the chromosomes into a manageable form prior to metaphase. The condensin I complex consists of two SMC subunits, SMC2 and SMC4, and three non-SMC subunits, CAP-H, CAP-G, and CAP-D2. An alternative complex, the condensin II complex, contains alternate non-SMC subunits, CAP-G2, CAP-H2, and CAP-D3. CAP-H2 is also known as Non-SMC condensin II complex, subunit H2 (NCAPH2) or kleisin beta isoform 2. The three non-SMC subunits in the condensing complexes form a regulatory subcomplex that is required to activate the SMC ATPases and to promote mitosis-specific chromatin binding of the holocomplex. The precise individual functions of each non-SMC protein in activation remain to be determined. Synonyms: CAPH2, Chromosome-associated protein H2

| | |
|-------------------|------------------------------|
| Molecular Weight: | 62463 Da |
| Gene ID: | 29781 |
| NCBI Accession: | NP_001171940 |
| UniProt: | Q6IBW4 |

Application Details

| | |
|--------------------|--|
| Application Notes: | ELISA 1: 1,000. Western blot 1: 100 - 1: 500. Other applications not tested. Optimal dilutions are dependent on conditions and should be determined by the user. |
| Restrictions: | For Research Use only |

Handling

| | |
|--------------------|--|
| Format: | Liquid |
| Concentration: | 0.25 mg/mL |
| Buffer: | PBS with 0.09 % (W/V) sodium azide |
| Preservative: | Sodium azide |
| Precaution of Use: | This product contains sodium azide: a POISONOUS AND HAZARDOUS SUBSTANCE which should be handled by trained staff only. |
| Handling Advice: | Avoid repeated freezing and thawing. |
| Storage: | 4 °C/-20 °C |
| Storage Comment: | Store the antibody at 2 - 8 °C up to one month or (in aliquots) at -20 °C for longer. |

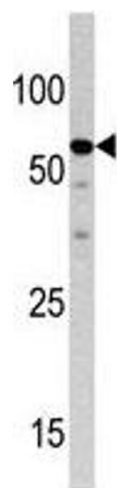


Image 1.