

Datasheet for ABIN357424

## anti-USP21 antibody (Middle Region)



[Go to Product page](#)

### 1 Image

#### Overview

Quantity:	0.4 mL
Target:	USP21
Binding Specificity:	AA 232-262, Middle Region
Reactivity:	Human
Host:	Rabbit
Clonality:	Polyclonal
Conjugate:	This USP21 antibody is un-conjugated
Application:	Western Blotting (WB), Enzyme Immunoassay (EIA)

#### Product Details

Immunogen:	KLH conjugated synthetic peptide between 232~262 amino acids from the central region of human USP21
Isotype:	Ig Fraction
Specificity:	This antibody detects Human USP21 at Center.
Purification:	Protein G Chromatography, eluted with high and low pH buffers and neutralized immediately, followed by dialysis against PBS

#### Target Details

Target:	USP21
Alternative Name:	USP21 ( <a href="#">USP21 Products</a> )

## Target Details

Background:	USP21 is a ubiquitin-specific protease, an enzyme that removes ubiquitin from ubiquitinated proteins. The encoded protein belongs to the C19 peptidase family, also known as family 2 of ubiquitin carboxyl-terminal hydrolases. This protein has been reported to be capable of removing NEDD8 from NEDD8 conjugates.Synonyms: Deubiquitinating enzyme 21, USP23, Ubiquitin carboxyl-terminal hydrolase 21, Ubiquitin thioesterase 21, Ubiquitin-specific-processing protease 21
Molecular Weight:	62656 Da
Gene ID:	27005, 9606
UniProt:	<a href="#">Q9UK80</a>

## Application Details

Application Notes:	ELISA 1: 1,000. Other applications not tested. Optimal dilutions are dependent on conditions and should be determined by the user.
Restrictions:	For Research Use only

## Handling

Format:	Liquid
Concentration:	0.25 mg/mL
Buffer:	PBS containing 0.09 % (W/V) Sodium Azide as preservative
Preservative:	Sodium azide
Precaution of Use:	This product contains sodium azide: a POISONOUS AND HAZARDOUS SUBSTANCE which should be handled by trained staff only.
Handling Advice:	Avoid repeated freezing and thawing.
Storage:	4 °C/-20 °C
Storage Comment:	Store undiluted at 2-8 °C for one month or (in aliquots) at -20 °C for longer.

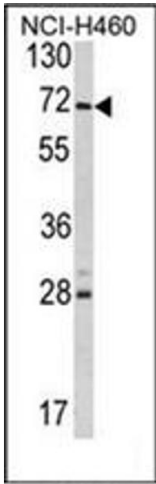


Image 1.