

Datasheet for ABIN357426
anti-TPX2 antibody (C-Term)[Go to Product page](#)

2 Images

Overview

Quantity:	0.4 mL
Target:	TPX2
Binding Specificity:	C-Term
Reactivity:	Human
Host:	Rabbit
Clonality:	Polyclonal
Conjugate:	This TPX2 antibody is un-conjugated
Application:	Western Blotting (WB), Immunohistochemistry (Paraffin-embedded Sections) (IHC (p)), Enzyme Immunoassay (EIA)

Product Details

Immunogen:	This antibody is generated from rabbits immunized with mixture of 3 KLH conjugated synthetic peptides selected from C-terminal region with phenylalanine at position 624, C- terminal region with serine at position 729, and center region of human NRG4.
Isotype:	Ig Fraction
Specificity:	This antibody detects P100.
Purification:	Protein G column, eluted with high and low pH buffers and neutralized immediately, followed by dialysis against PBS

Target Details

Target:	TPX2
---------	------

Target Details

Alternative Name:	TPX2 / DIL2 (TPX2 Products)
Background:	<p>The nuclear protein p100 is a proliferation-associated protein whose expression is restricted to cell cycle phases S, G2, and M. Exclusively expressed in proliferating cells from the transition G1/S until the end of cytokinesis. During mitosis it is strictly associated with the spindle pole and with the mitotic spindle, whereas during S and G2, it is diffusely distributed throughout the nucleus. The full-length cDNA encodes a 747-amino acid protein with a putative ATP/GTP-binding site motif. RT-PCR analysis demonstrated strong expression of in lung carcinoma cell lines but not in normal lung tissues. Expression was also found in adult placenta, skeletal muscle, thymus, testis, and small intestine and in fetal brain, liver, and kidney. P100 is also correlated to cancer prognosis. Synonyms: C20orf1, C20orf2, DIL-2, Differentially expressed in cancerous and non-cancerous lung cells 2, HCA519, Hepatocellular carcinoma-associated antigen 519, Restricted expression proliferation-associated protein 100, Targeting protein for Xklp2</p>
Molecular Weight:	85653 Da
Gene ID:	22974, 9606
UniProt:	Q9ULW0

Application Details

Application Notes:	<p>ELISA 1: 1,000. Western blot 1: 100 - 1: 500. Immunohistochemistry 1: 50 - 1: 100.</p> <p>Other applications not tested.</p> <p>Optimal dilutions are dependent on conditions and should be determined by the user.</p>
Restrictions:	For Research Use only

Handling

Format:	Liquid
Concentration:	0.25 mg/mL
Buffer:	PBS with 0.09 % (W/V) sodium azide
Preservative:	Sodium azide
Precaution of Use:	This product contains sodium azide: a POISONOUS AND HAZARDOUS SUBSTANCE which should be handled by trained staff only.
Handling Advice:	Avoid repeated freezing and thawing.

Handling

Storage:	4 °C/-20 °C
Storage Comment:	Store the antibody at 2 - 8 °C up to one month or (in aliquots) at -20 °C for longer.

Images

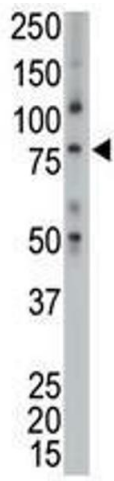


Image 1.

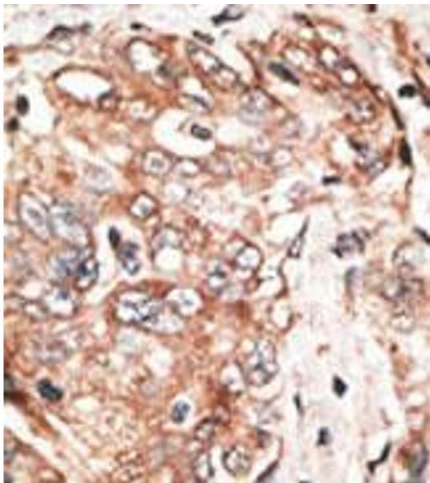


Image 2.