

Datasheet for ABIN357430

**anti-TDGF1 antibody (N-Term)****2** Images[Go to Product page](#)

## Overview

Quantity:	0.4 mL
Target:	TDGF1
Binding Specificity:	N-Term
Reactivity:	Human
Host:	Rabbit
Clonality:	Polyclonal
Conjugate:	This TDGF1 antibody is un-conjugated
Application:	Western Blotting (WB), Immunohistochemistry (Paraffin-embedded Sections) (IHC (p)), Enzyme Immunoassay (EIA)

## Product Details

Immunogen:	This antibody is generated from rabbits immunized with a KLH conjugated synthetic peptide selected from the N-terminal region of human TDGF1.
Isotype:	Ig Fraction
Specificity:	This antibody detects CRIPTO (TDGF1) at N-term.
Purification:	Protein G column, eluted with high and low pH buffers and neutralized immediately, followed by dialysis against PBS

## Target Details

Target:	TDGF1
Alternative Name:	TDGF1 / CRIPTO ( <a href="#">TDGF1 Products</a> )

## Target Details

Background:	TDGF1 is expressed both in ES cells and during the early phases of embryo development, while in adults it is reactivated in a wide range of epithelial cancers. This protein could play a role in the determination of the epiblastic cells that subsequently give rise to the mesoderm. It is preferentially expressed in gastric and colorectal carcinomas compared to their normal counterparts.Synonyms: CRGF, Cripto-1 growth factor, Epidermal growth factor-like cripto protein CR1, Teratocarcinoma-derived growth factor 1
Molecular Weight:	21168 Da
Gene ID:	6997, 9606
UniProt:	<a href="#">P13385</a>
Pathways:	<a href="#">EGFR Signaling Pathway</a>

## Application Details

Application Notes:	ELISA 1: 1,000. Western blot 1: 100 - 1: 500. Immunohistochemistry 1: 50 - 1: 100. Other applications not tested. Optimal dilutions are dependent on conditions and should be determined by the user.
Restrictions:	For Research Use only

## Handling

Format:	Liquid
Concentration:	0.25 mg/mL
Buffer:	PBS with 0.09 % (W/V) sodium azide
Preservative:	Sodium azide
Precaution of Use:	This product contains sodium azide: a POISONOUS AND HAZARDOUS SUBSTANCE which should be handled by trained staff only.
Handling Advice:	Avoid repeated freezing and thawing.
Storage:	4 °C/-20 °C
Storage Comment:	Store the antibody at 2 - 8 °C up to one month or (in aliquots) at -20 °C for longer.

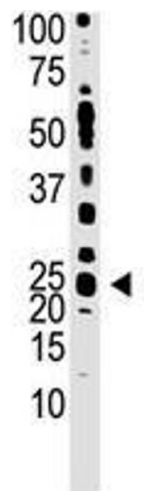


Image 1.

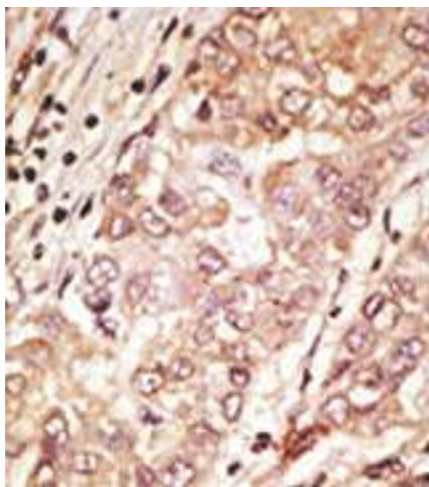


Image 2.