



[Go to Product page](#)

Datasheet for ABIN357461
anti-GDF5 antibody (N-Term)

2 Images

Overview

Quantity:	0.4 mL
Target:	GDF5
Binding Specificity:	N-Term
Reactivity:	Human
Host:	Rabbit
Clonality:	Polyclonal
Conjugate:	This GDF5 antibody is un-conjugated
Application:	Western Blotting (WB), Enzyme Immunoassay (EIA)

Product Details

Immunogen:	This antibody is generated from rabbits immunized with a KLH conjugated synthetic peptide selected from the N-terminal region of human GDF5.
Isotype:	Ig Fraction
Specificity:	This antibody detects GDF5 at N-term.
Cross-Reactivity (Details):	Species reactivity (tested):Human.
Purification:	Protein G Chromatography, eluted with high and low pH buffers and neutralized immediately, followed by dialysis against PBS

Target Details

Target:	GDF5
---------	------

Target Details

Alternative Name:	BMP14 / GDF5 (GDF5 Products)
Background:	<p>GDF5 is a member of the bone morphogenetic protein (BMP) family and the TGF-beta superfamily. This group of proteins is characterized by a polybasic proteolytic processing site which is cleaved to produce a mature protein containing seven conserved cysteine residues. The members of this family are regulators of cell growth and differentiation in both embryonic and adult tissues. Mutations in this gene are associated with acromesomelic dysplasia, Hunter-Thompson type, brachydactyly, type C, and chondrodysplasia, Grebe type. These associations confirm that the gene product plays a role in skeletal development. Synonyms: Bone Morphogenetic Protein 14, CDMP1, Cartilage-derived morphogenetic protein 1, GDF-5, Growth/differentiation factor 5, Radotermin</p>
Molecular Weight:	55410 Da
Gene ID:	8200, 9606
UniProt:	P43026

Application Details

Application Notes:	<p>ELISA: 1/1,000. Western blot: 1/100-1/500. Immunohistochemistry: 1/10-1/50. Other applications not tested. Optimal dilutions are dependent on conditions and should be determined by the user.</p>
Restrictions:	For Research Use only

Handling

Format:	Liquid
Concentration:	0.25 mg/mL
Buffer:	PBS with 0.09 % (W/V) Sodium Azide as preservative.
Preservative:	Sodium azide
Precaution of Use:	This product contains sodium azide: a POISONOUS AND HAZARDOUS SUBSTANCE which should be handled by trained staff only.
Handling Advice:	Avoid repeated freezing and thawing.
Storage:	4 °C/-20 °C
Storage Comment:	Store the antibody undiluted at 2-8 °C for one month or (in aliquots) at -20 °C for longer.

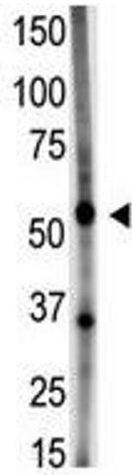


Image 1.

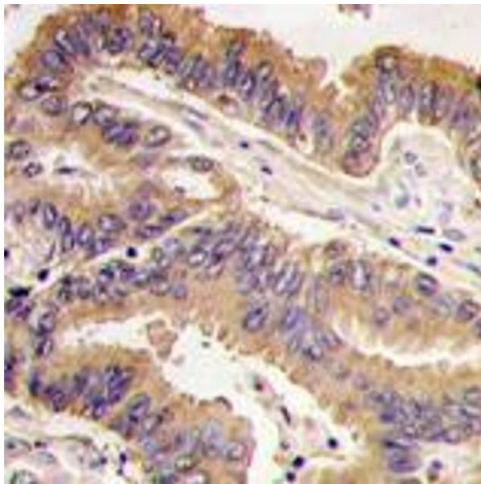


Image 2.