



[Go to Product page](#)

Datasheet for ABIN357470

## anti-SMURF1 antibody (C-Term)

### 2 Images

#### Overview

Quantity:	0.4 mL
Target:	SMURF1
Binding Specificity:	C-Term
Reactivity:	Human, Mouse
Host:	Rabbit
Clonality:	Polyclonal
Conjugate:	This SMURF1 antibody is un-conjugated
Application:	Western Blotting (WB), Immunohistochemistry (Paraffin-embedded Sections) (IHC (p)), Enzyme Immunoassay (EIA)

#### Product Details

Immunogen:	This antibody is generated from rabbits immunized with a KLH conjugated synthetic peptide selected from the C-terminal region of SMURF1.
Isotype:	Ig Fraction
Specificity:	This antibody detects SMURF1 at C-term.
Purification:	Protein G column, eluted with high and low pH buffers and neutralized immediately, followed by dialysis against PBS

#### Target Details

Target:	SMURF1
Alternative Name:	SMURF1 ( <a href="#">SMURF1 Products</a> )

## Target Details

---

Background:	SMURF1 is an E3 ubiquitin-protein ligase which accepts ubiquitin from an E2 ubiquitin-conjugating enzyme in the form of a thioester and then directly transfers the ubiquitin to targeted substrates. This protein interacts with receptor-regulated SMADs specific for the BMP pathway, SMAD1 and SMAD5, in order to trigger their ubiquitination and degradation and thereby their inactivation. Synonyms: E3 ubiquitin-protein ligase SMURF1, KIAA1625, SMAD ubiquitination regulatory factor 1, SMAD-specific E3 ubiquitin-protein ligase 1, SMURF 1, SMURF-1
Molecular Weight:	86113 Da
Gene ID:	57154, 9606
UniProt:	<a href="#">Q9HCE7</a>
Pathways:	<a href="#">Regulation of Cell Size</a>

## Application Details

---

Application Notes:	ELISA 1: 1,000. Western blot 1: 100 - 1: 500. Immunohistochemistry 1: 50 - 1: 100. Other applications not tested. Optimal dilutions are dependent on conditions and should be determined by the user.
Restrictions:	For Research Use only

## Handling

---

Format:	Liquid
Concentration:	0.25 mg/mL
Buffer:	PBS with 0.09 % (W/V) sodium azide
Preservative:	Sodium azide
Precaution of Use:	This product contains sodium azide: a POISONOUS AND HAZARDOUS SUBSTANCE which should be handled by trained staff only.
Handling Advice:	Avoid repeated freezing and thawing.
Storage:	4 °C/-20 °C
Storage Comment:	Store the antibody at 2 - 8 °C up to one month or (in aliquots) at -20 °C for longer.

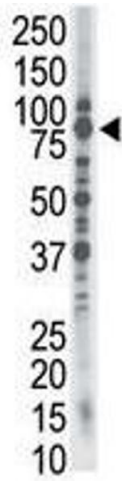


Image 1.

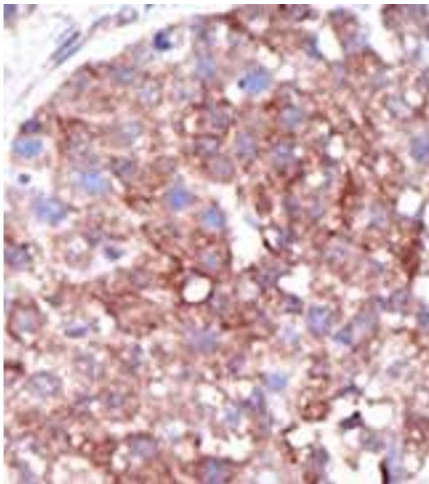


Image 2.