

Datasheet for ABIN357485
anti-UBE2D1 antibody (C-Term)[Go to Product page](#)

2 Images

Overview

| | |
|----------------------|--|
| Quantity: | 0.4 mL |
| Target: | UBE2D1 |
| Binding Specificity: | C-Term |
| Reactivity: | Human, Mouse |
| Host: | Rabbit |
| Clonality: | Polyclonal |
| Conjugate: | This UBE2D1 antibody is un-conjugated |
| Application: | Western Blotting (WB), Immunohistochemistry (Paraffin-embedded Sections) (IHC (p)), Enzyme Immunoassay (EIA) |

Product Details

| | |
|---------------|--|
| Immunogen: | This antibody is generated from rabbits immunized with a KLH conjugated synthetic peptide selected from the C-terminal region of human UBE2D1. |
| Isotype: | Ig Fraction |
| Specificity: | This antibody is specific to UBE2D1/SFT (C-term). |
| Purification: | Protein G Chromatography, eluted with high and low pH buffers and neutralized immediately, followed by dialysis against PBS. |

Target Details

| | |
|-------------------|--|
| Target: | UBE2D1 |
| Alternative Name: | UBE2D1 / SFT (UBE2D1 Products) |

Target Details

| | |
|-------------------|---|
| Background: | The modification of proteins with ubiquitin is an important cellular mechanism for targeting abnormal or short-lived proteins for degradation. Ubiquitination involves at least three classes of enzymes: ubiquitin-activating enzymes, or E1s, ubiquitin-conjugating enzymes, or E2s, and ubiquitin-protein ligases, or E3s. UBE2D1 is a member of the E2 ubiquitin-conjugating enzyme family. This enzyme is closely related to a stimulator of iron transport (SFT), and is up-regulated in hereditary hemochromatosis. It also functions in the ubiquitination of the tumor-suppressor protein p53 and the hypoxia-inducible transcription factor HIF1alpha by interacting with the E1 ubiquitin-activating enzyme and the E3 ubiquitin-protein ligases. Synonyms: E2(17)KB 1, UBC4/5 homolog, UBCH5, UBCH5A, Ubiquitin carrier protein D1, Ubiquitin-conjugating enzyme E2 D1, Ubiquitin-protein ligase D1 |
| Molecular Weight: | 16602 Da |
| Gene ID: | 7321, 5874 |
| UniProt: | P51668 |
| Pathways: | Activation of Innate immune Response , Toll-Like Receptors Cascades |

Application Details

| | |
|--------------------|---|
| Application Notes: | ELISA: 1/1,000. Western Blot: 1/100-1/500. Immunohistochemistry: 1/50-1/100. Other applications not tested. Optimal dilutions are dependent on conditions and should be determined by the user. |
| Restrictions: | For Research Use only |

Handling

| | |
|--------------------|--|
| Format: | Liquid |
| Concentration: | 0.25 mg/mL |
| Buffer: | PBS with 0.09 % (W/V) Sodium Azide as preservative. |
| Preservative: | Sodium azide |
| Precaution of Use: | This product contains sodium azide: a POISONOUS AND HAZARDOUS SUBSTANCE which should be handled by trained staff only. |
| Handling Advice: | Avoid repeated freezing and thawing. |
| Storage: | 4 °C/-20 °C |
| Storage Comment: | Store the antibody undiluted at 2-8 °C for one month or (in aliquots) at -20 °C for longer. |

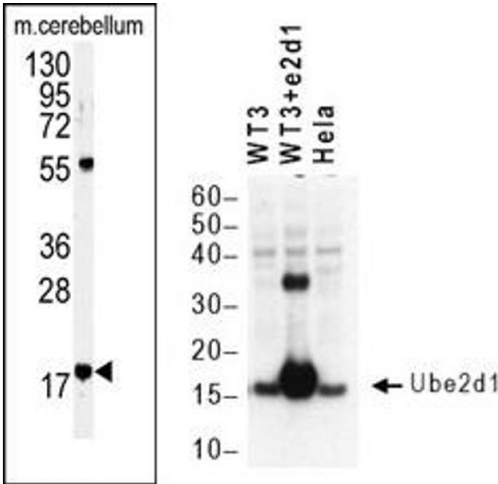


Image 1.

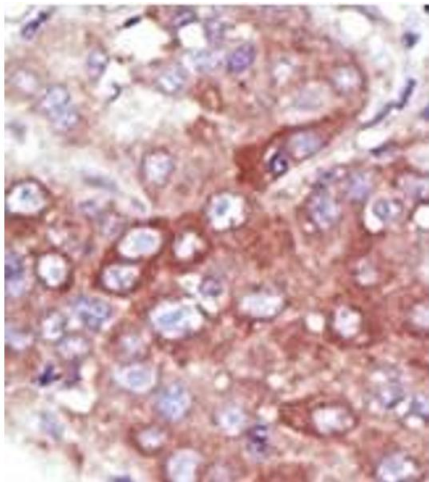


Image 2.