



[Go to Product page](#)

Datasheet for ABIN357497

anti-UBE2S antibody (N-Term)

2 Images

Overview

Quantity:	0.4 mL
Target:	UBE2S
Binding Specificity:	N-Term
Reactivity:	Human
Host:	Rabbit
Clonality:	Polyclonal
Conjugate:	This UBE2S antibody is un-conjugated
Application:	Western Blotting (WB), Immunohistochemistry (Paraffin-embedded Sections) (IHC (p)), Enzyme Immunoassay (EIA)

Product Details

Immunogen:	This antibody is generated from rabbits immunized with a KLH conjugated synthetic peptide selected from the N-terminal region of human E2EPF.
Isotype:	Ig Fraction
Specificity:	This antibody is specific to UBE2S/E2EPF (N-term). Predicted to cross react with Mouse (100 % Antigen Homology).
Purification:	Protein G Chromatography, eluted with high and low pH buffers and neutralized immediately, followed by dialysis against PBS.

Target Details

Target:	UBE2S
---------	-------

Target Details

Alternative Name:	UBE2S (UBE2S Products)
Background:	This gene encodes a member of the ubiquitin-conjugating enzyme family. The encoded protein is able to form a thiol ester linkage with ubiquitin in a ubiquitin activating enzyme-dependent manner, a characteristic property of ubiquitin carrier proteins. Synonyms: E2-EPF5, E2EPF, OK/SW-cl.73, Ubiquitin carrier protein S, Ubiquitin-conjugating enzyme E2 S, Ubiquitin-conjugating enzyme E2-24 kDa, Ubiquitin-protein ligase S
Molecular Weight:	23845 Da
Gene ID:	27338, 9606
UniProt:	Q16763
Pathways:	Ubiquitin Proteasome Pathway

Application Details

Application Notes:	ELISA: 1/1,000. Western Blot: 1/100-1/500. Immunohistochemistry: 1/50-1/100. Other applications not tested. Optimal dilutions are dependent on conditions and should be determined by the user.
Restrictions:	For Research Use only

Handling

Format:	Liquid
Concentration:	0.25 mg/mL
Buffer:	PBS with 0.09 % (W/V) Sodium Azide as preservative.
Preservative:	Sodium azide
Precaution of Use:	This product contains sodium azide: a POISONOUS AND HAZARDOUS SUBSTANCE which should be handled by trained staff only.
Handling Advice:	Avoid repeated freezing and thawing.
Storage:	4 °C/-20 °C
Storage Comment:	Store the antibody undiluted at 2-8 °C for one month or (in aliquots) at -20 °C for longer.

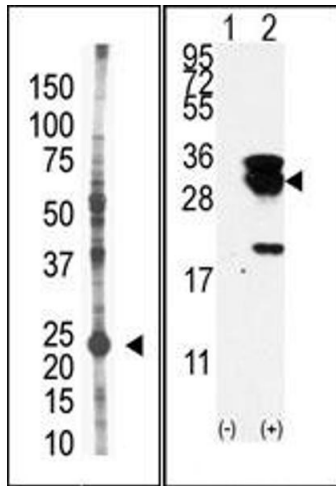


Image 1.

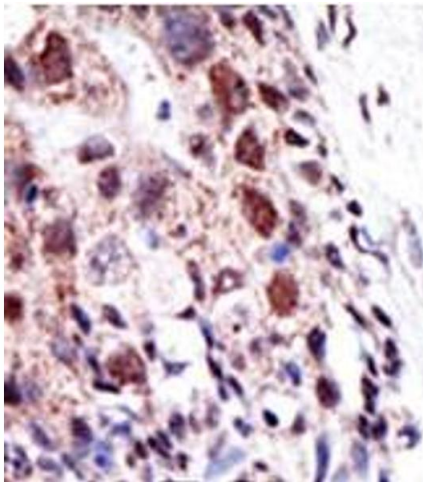


Image 2.