

Datasheet for ABIN357598
anti-UBE2E3 antibody (N-Term)

2 Images

[Go to Product page](#)

Overview

Quantity:	0.4 mL
Target:	UBE2E3
Binding Specificity:	N-Term
Reactivity:	Human, Mouse
Host:	Rabbit
Clonality:	Polyclonal
Conjugate:	This UBE2E3 antibody is un-conjugated
Application:	Western Blotting (WB), Immunohistochemistry (Paraffin-embedded Sections) (IHC (p)), Enzyme Immunoassay (EIA)

Product Details

Immunogen:	This antibody is generated from rabbits immunized with a KLH conjugated synthetic peptide selected from the N-terminal region of human UBCH9.
Isotype:	Ig Fraction
Specificity:	This antibody is specific to UBCH9/UBE2E3 (N-term).
Purification:	Protein G Chromatography, eluted with high and low pH buffers and neutralized immediately, followed by dialysis against PBS.

Target Details

Target:	UBE2E3
Alternative Name:	UBE2E3 (UBE2E3 Products)

Target Details

Background: The modification of proteins with ubiquitin is an important cellular mechanism for targeting abnormal or short-lived proteins for degradation. Ubiquitination involves at least three classes of enzymes: ubiquitin-activating enzymes, or E1s, ubiquitin-conjugating enzymes, or E2s, and ubiquitin-protein ligases, or E3s. UBCH9 is a member of the E2 ubiquitin-conjugating enzyme family. The encoded protein shares 100 % sequence identity with the mouse and rat counterparts, which indicates that this enzyme is highly conserved in eukaryotes. Two alternatively spliced transcript variants encoding the same protein have been found. Synonyms: UBCE4, UBCH9, UbcM2, Ubiquitin carrier protein E3, Ubiquitin-conjugating enzyme E2 E3, Ubiquitin-conjugating enzyme E2-23 kDa, Ubiquitin-protein ligase E3

Molecular Weight: 22912 Da

Gene ID: 10477, 9606

UniProt: [Q969T4](#)

Application Details

Application Notes: ELISA: 1/1,000. Western Blot: 1/100-1/500. Immunohistochemistry: 1/50-1/100.
Other applications not tested.
Optimal dilutions are dependent on conditions and should be determined by the user.

Restrictions: For Research Use only

Handling

Format: Liquid

Concentration: 0.25 mg/mL

Buffer: PBS with 0.09 % (W/V) Sodium Azide as preservative.

Preservative: Sodium azide

Precaution of Use: This product contains sodium azide: a POISONOUS AND HAZARDOUS SUBSTANCE which should be handled by trained staff only.

Handling Advice: Avoid repeated freezing and thawing.

Storage: 4 °C/-20 °C

Storage Comment: Store the antibody undiluted at 2-8 °C for one month or (in aliquots) at -20 °C for longer.

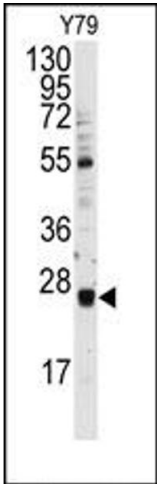


Image 1.

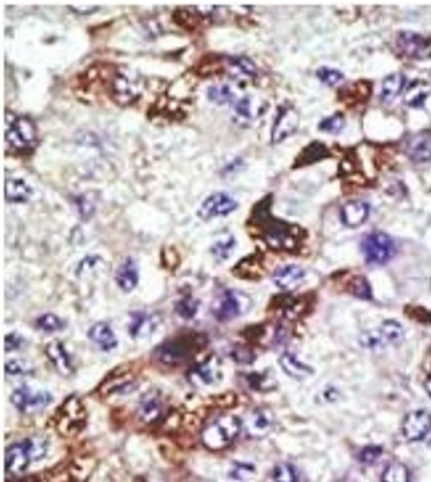


Image 2.