

Datasheet for ABIN357602
anti-MIB1 antibody (N-Term)

2 Images

[Go to Product page](#)

Overview

Quantity:	0.4 mL
Target:	MIB1
Binding Specificity:	N-Term
Reactivity:	Human
Host:	Rabbit
Clonality:	Polyclonal
Conjugate:	This MIB1 antibody is un-conjugated
Application:	Western Blotting (WB), Immunofluorescence (IF), Immunohistochemistry (Paraffin-embedded Sections) (IHC (p)), Enzyme Immunoassay (EIA)

Product Details

Immunogen:	This antibody is generated from rabbits immunized with a KLH conjugated synthetic peptide selected from the N-terminal region of human MIB.
Isotype:	Ig Fraction
Specificity:	This antibody is specific to MIB1 (N-term). Predicted to cross react with Mouse and Zebrafish (100 % Antigen Homology).
Purification:	Protein G Chromatography, eluted with high and low pH buffers and neutralized immediately, followed by dialysis against PBS.

Target Details

Target:	MIB1
---------	------

Target Details

Alternative Name:	MIB1 (MIB1 Products)
Background:	MIB is an E3 ubiquitin-protein ligase that mediates ubiquitination of Delta receptors, which act as ligands of Notch proteins. This protein positively regulates the Delta-mediated Notch signaling by ubiquitinating the intracellular domain of Delta, leading to endocytosis of Delta receptors. MIB probably mediates ubiquitination and subsequent proteasomal degradation of DAPK1, thereby antagonizing anti-apoptotic effects of DAPK1 to promote TNF-induced apoptosis.Synonyms: DAPK-interacting protein 1, DIP1, E3 ubiquitin-protein ligase MIB1, KIAA1323, Mind bomb homolog 1, ZZANK2, Zinc finger ZZ type with ankyrin repeat domain protein 2
Molecular Weight:	110135 Da
Gene ID:	57534, 9606
UniProt:	Q86YT6
Pathways:	SARS-CoV-2 Protein Interactome , The Global Phosphorylation Landscape of SARS-CoV-2 Infection

Application Details

Application Notes:	ELISA: 1/1,000. Western Blot: 1/100-1/500. Immunohistochemistry: 1/50-1/100. Immunofluorescence: 1/20-1/100. Other applications not tested. Optimal dilutions are dependent on conditions and should be determined by the user.
Restrictions:	For Research Use only

Handling

Format:	Liquid
Concentration:	0.25 mg/mL
Buffer:	PBS with 0.09 % (W/V) Sodium Azide as preservative.
Preservative:	Sodium azide
Precaution of Use:	This product contains sodium azide: a POISONOUS AND HAZARDOUS SUBSTANCE which should be handled by trained staff only.
Handling Advice:	Avoid repeated freezing and thawing.
Storage:	4 °C/-20 °C

Handling

Storage Comment: Store the antibody undiluted at 2-8 °C for one month or (in aliquots) at-20 °C for longer.

Images

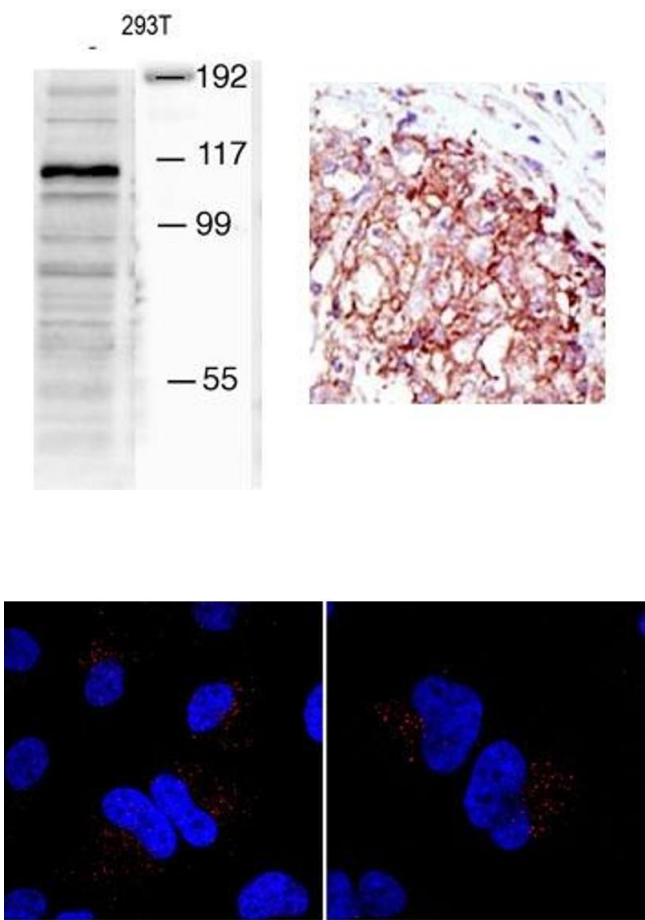


Image 1.

Image 2.