

Datasheet for ABIN357688
anti-AGL antibody (C-Term)[Go to Product page](#)

2 Images

Overview

Quantity:	0.4 mL
Target:	AGL
Binding Specificity:	AA 1487-1516, C-Term
Reactivity:	Human
Host:	Rabbit
Clonality:	Polyclonal
Conjugate:	This AGL antibody is un-conjugated
Application:	Western Blotting (WB), Immunofluorescence (IF), Enzyme Immunoassay (EIA)

Product Details

Immunogen:	KLH conjugated synthetic peptide between 1487~1516 amino acids from the C-terminal region of Human AGL
Isotype:	Ig Fraction
Specificity:	This antibody is specific to AGL/GDE (C-term).
Purification:	Protein A Chromatography, eluted with high and low pH buffers and neutralized immediately, followed by dialysis against PBS.

Target Details

Target:	AGL
Alternative Name:	AGL / GDE (AGL Products)

Target Details

Background:	AGL is a glycogen debrancher enzyme which is involved in glycogen degradation. This enzyme has two independent catalytic activities which occur at different sites on the protein: a 4-alpha-glucotransferase activity and a amylo-1,6-glucosidase activity. Mutations in the AGL gene are associated with glycogen storage disease although a wide range of enzymatic and clinical variability occurs which may be due to tissue-specific alternative splicing.Synonyms: 4-alpha-glucanotransferase, 6-glucosidase, Amylo-alpha-1, Glycogen debranching enzyme
Molecular Weight:	174764 Da
Gene ID:	178, 9606
UniProt:	P35573
Pathways:	Cellular Glucan Metabolic Process

Application Details

Application Notes:	ELISA: 1/1,000. Western Blot: 1/100-1/500. This antibody is reported to work in Immunofluorescence (See: Cheng, Alan, et al. Genes &Dev.2007 Oct 01,21(19): 2399-2409). Other applications not tested. Optimal dilutions are dependent on conditions and should be determined by the user.
Restrictions:	For Research Use only

Handling

Format:	Liquid
Concentration:	0.25 mg/mL
Buffer:	PBS with 0.09 % (W/V) Sodium Azide as preservative.
Preservative:	Sodium azide
Precaution of Use:	This product contains sodium azide: a POISONOUS AND HAZARDOUS SUBSTANCE which should be handled by trained staff only.
Handling Advice:	Avoid repeated freezing and thawing.
Storage:	4 °C/-20 °C
Storage Comment:	Store the antibody undiluted at 2-8 °C for one month or (in aliquots) at -20 °C for longer.

Image 1.

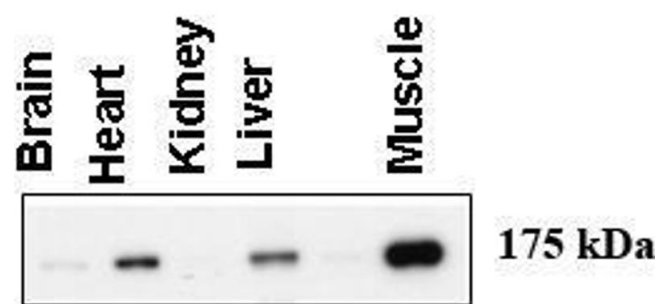


Image 2.

