

Datasheet for ABIN357734

**anti-PML antibody (Sumoylation Site)****2** Images[Go to Product page](#)

## Overview

Quantity:	0.4 mL
Target:	PML
Binding Specificity:	Sumoylation Site
Reactivity:	Human
Host:	Rabbit
Clonality:	Polyclonal
Conjugate:	This PML antibody is un-conjugated
Application:	Western Blotting (WB), Immunohistochemistry (Paraffin-embedded Sections) (IHC (p)), Enzyme Immunoassay (EIA)

## Product Details

Immunogen:	This antibody is generated from rabbits immunized with the KLH conjugated synthetic peptide PRKVIKMESEEGKEA containing a predicted sumoylation site from the central region of human PML.
Isotype:	Ig Fraction
Specificity:	This antibody is specific to PML (Sumoylation Site).
Purification:	Protein G Chromatography, eluted with high and low pH buffers and neutralized immediately, followed by dialysis against PBS.

## Target Details

Target:	PML
---------	-----

## Target Details

Alternative Name:	PML / RNF71 ( <a href="#">PML Products</a> )
Background:	<p>PML is a member of the tripartite motif (TRIM) family. The TRIM motif includes three zinc-binding domains, a RING, a B-box type 1 and a B-box type 2, and a coiled-coil region. This phosphoprotein localizes to nuclear bodies where it functions as a transcription factor and tumor suppressor. Its expression is cell-cycle related and it regulates the p53 response to oncogenic signals. The gene is often involved in the translocation with the retinoic acid receptor alpha gene associated with acute promyelocytic leukemia (APL).Synonyms: MYL, Probable transcription factor PML, RING finger protein 71, TRIM19, Tripartite motif-containing protein 19</p>
Molecular Weight:	97516 Da
Gene ID:	5371, 9606
UniProt:	<a href="#">P29590</a>
Pathways:	<a href="#">p53 Signaling</a> , <a href="#">Retinoic Acid Receptor Signaling Pathway</a> , <a href="#">Maintenance of Protein Location</a> , <a href="#">Positive Regulation of Endopeptidase Activity</a> , <a href="#">Protein targeting to Nucleus</a>

## Application Details

Application Notes:	<p>ELISA: 1/1,000. Western Blot: 1/100-1/500. Immunohistochemistry: 1/50-1/100.</p> <p>Other applications not tested.</p> <p>Optimal dilutions are dependent on conditions and should be determined by the user.</p>
Restrictions:	For Research Use only

## Handling

Format:	Liquid
Concentration:	0.25 mg/mL
Buffer:	PBS with 0.09 % (W/V) Sodium Azide as preservative.
Preservative:	Sodium azide
Precaution of Use:	This product contains sodium azide: a POISONOUS AND HAZARDOUS SUBSTANCE which should be handled by trained staff only.
Handling Advice:	Avoid repeated freezing and thawing.
Storage:	4 °C/-20 °C
Storage Comment:	Store the antibody undiluted at 2-8 °C for one month or (in aliquots) at -20 °C for longer.

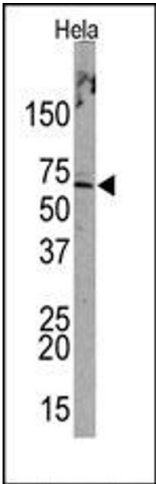


Image 1.

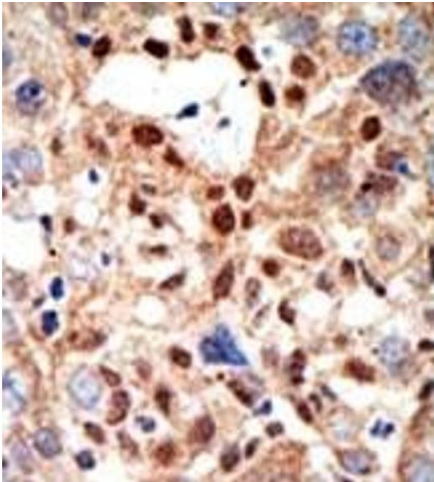


Image 2.