

Datasheet for ABIN357744
anti-SAE1 antibody (C-Term)



[Go to Product page](#)

2 Images

Overview

Quantity:	0.4 mL
Target:	SAE1
Binding Specificity:	C-Term
Reactivity:	Human, Mouse
Host:	Rabbit
Clonality:	Polyclonal
Conjugate:	This SAE1 antibody is un-conjugated
Application:	Western Blotting (WB), Immunohistochemistry (Paraffin-embedded Sections) (IHC (p)), Enzyme Immunoassay (EIA)

Product Details

Immunogen:	This antibody is generated from rabbits immunized with a KLH conjugated synthetic peptide selected from the C-terminal region of human AOS1.
Isotype:	Ig Fraction
Specificity:	This antibody is specific to SAE1/AOS1 (C-term).
Purification:	Protein G Chromatography, eluted with high and low pH buffers and neutralized immediately, followed by dialysis against PBS.

Target Details

Target:	SAE1
Alternative Name:	SAE1 / AOS1 (SAE1 Products)

Target Details

Background:	The dimeric enzyme AOS1 acts as a an E1 ligase for SUMO1, SUMO2, SUMO3, and probably SUMO4. It mediates ATP-dependent activation of SUMO proteins and formation of a thioester with a conserved cysteine residue on SAE2.Synonyms: SUA1, SUMO-activating enzyme subunit 1, UBLE1A, Ubiquitin-like 1-activating enzyme E1A
Molecular Weight:	38450 Da
Gene ID:	10055, 9606
UniProt:	Q9UBE0

Application Details

Application Notes:	ELISA: 1/1,000. Western Blot: 1/100-1/500. Immunohistochemistry: 1/50-1/100. Other applications not tested. Optimal dilutions are dependent on conditions and should be determined by the user.
Restrictions:	For Research Use only

Handling

Format:	Liquid
Concentration:	0.25 mg/mL
Buffer:	PBS with 0.09 % (W/V) Sodium Azide as preservative.
Preservative:	Sodium azide
Precaution of Use:	This product contains sodium azide: a POISONOUS AND HAZARDOUS SUBSTANCE which should be handled by trained staff only.
Handling Advice:	Avoid repeated freezing and thawing.
Storage:	4 °C/-20 °C
Storage Comment:	Store the antibody undiluted at 2-8 °C for one month or (in aliquots) at -20 °C for longer.

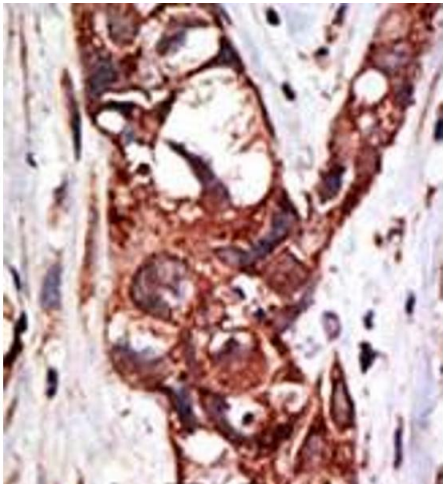


Image 1.

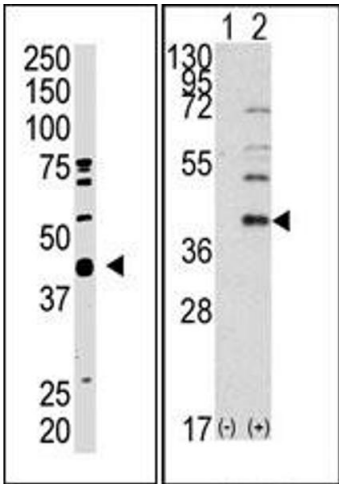


Image 2.