

Datasheet for ABIN357782  
**anti-ACSL6 antibody (Middle Region)**[Go to Product page](#)

## 2 Images

## Overview

Quantity:	0.4 mL
Target:	ACSL6
Binding Specificity:	Middle Region
Reactivity:	Human, Mouse
Host:	Rabbit
Clonality:	Polyclonal
Conjugate:	This ACSL6 antibody is un-conjugated
Application:	Western Blotting (WB), Immunohistochemistry (Paraffin-embedded Sections) (IHC (p)), Enzyme Immunoassay (EIA)

## Product Details

Immunogen:	This antibody is generated from rabbits immunized with a KLH conjugated synthetic peptide selected from the center region of human FACL6.
Isotype:	Ig Fraction
Specificity:	This antibody is specific to FACL6 (Center).
Purification:	Protein G Chromatography, eluted with high and low pH buffers and neutralized immediately, followed by dialysis against PBS.

## Target Details

Target:	ACSL6
Alternative Name:	ACSL6 ( <a href="#">ACSL6 Products</a> )

## Target Details

**Background:** FACL6 is involved in activation of long-chain fatty acids for both synthesis of cellular lipids, and degradation via beta-oxidation. It plays an important role in fatty acid metabolism in brain and the acyl-CoAs produced may be utilized exclusively for the synthesis of the brain lipid. FACL6 is expressed predominantly in erythrocyte precursors, in particular in reticulocytes, fetal blood cells derived from fetal liver, haemopoietic stem cells from cord blood, bone marrow, and brain. Expression is low at earlier stages of erythroid development but is very high in reticulocytes. This protein is involved in myelodysplastic syndrome (MDS) with basophilia, acute myelogenous leukemia (AML) with eosinophilia, and acute eosinophilic leukemia (AEL). It is characterized by a chromosomal translocation t(5,12)(q31,p13) that involves ETV6 and ACSL6. Synonyms: ACS2, FACL6, KIAA0837, LACS5, Long-chain acyl-CoA synthetase 6, Long-chain-fatty-acid--CoA ligase 6

**Molecular Weight:** 77680 Da

**Gene ID:** 23305, 5874

**UniProt:** [Q9UKU0](#)

## Application Details

**Application Notes:** ELISA: 1/1,000. Western blot: 1/100-1/500. Immunohistochemistry: 1/50-1/100.  
Other applications not tested.  
Optimal dilutions are dependent on conditions and should be determined by the user.

**Restrictions:** For Research Use only

## Handling

**Format:** Liquid

**Concentration:** 0.25 mg/mL

**Buffer:** PBS with 0.09 % (W/V) Sodium Azide as preservative.

**Preservative:** Sodium azide

**Precaution of Use:** This product contains sodium azide: a POISONOUS AND HAZARDOUS SUBSTANCE which should be handled by trained staff only.

**Handling Advice:** Avoid repeated freezing and thawing.

**Storage:** 4 °C/-20 °C

**Storage Comment:** Store the antibody undiluted at 2-8 °C for one month or (in aliquots) at -20 °C for longer.

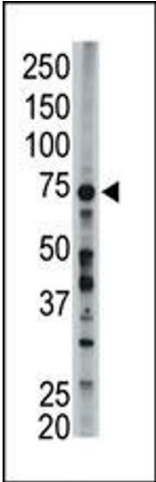


Image 1.

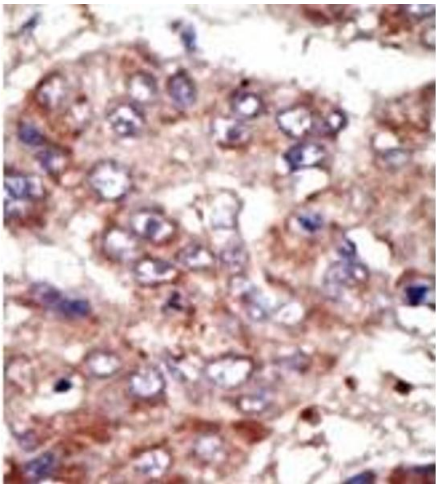


Image 2.